

Sunbeam

SERVICE MANUAL

EM6910

Dual Thermoblock Block

Coffee Machine



ISSUE: A

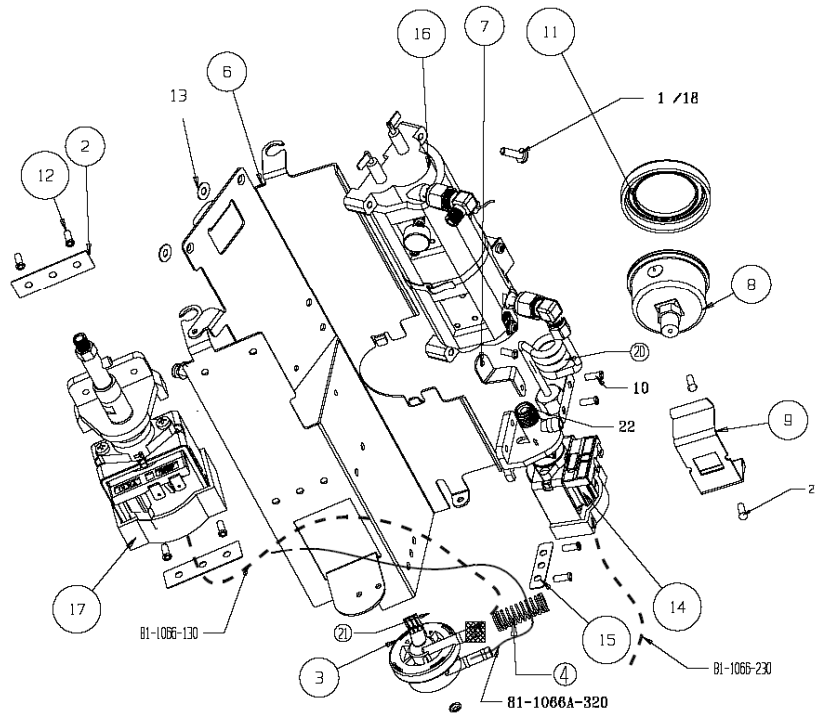
DATE: 1/02/2007

SPARE PARTS LIST

Note: Not all parts are available as spare parts. Please check price list.

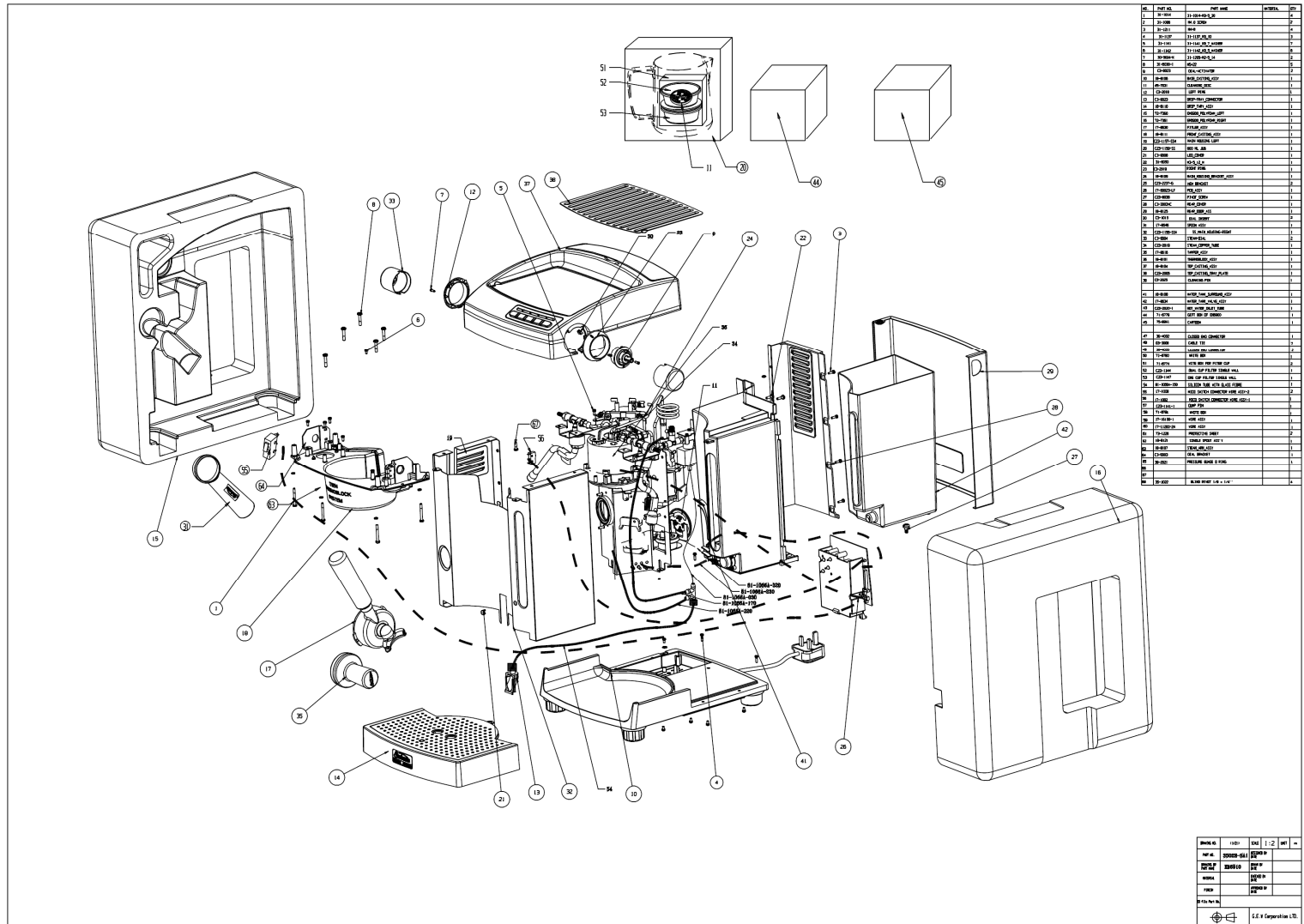
Item	Description	Sunbeam Part No.
	Filter anti-calc cartridge	EM69101
Page 5, #11	Cleaning disc	EM69102
Page 6, # 1 - 4	Filter handle assembly	EM69103
Page 5, #31	Measuring spoon	EM69104
Page 5, #35	Tamp	EM69105
Page 7, # 1 - 11	Water tank assembly	EM69106
Page 5, # 52	1 cup filter single wall	EM69107
Page 5, # 53	2 cup filter single wall	EM69108
Page 5, # 20	Milk frothing jug 800ml	EM69109
	Steam tube assembly	EM69110
	Valve assembly	EM69112
	Brew head seal	EM69116
	Steam / water valve assembly + steam pin	EM69117
Page 5, # 3	Rear door hinge screw	EM69118
	New piping sets	EM69122
	Tension anti-drip spring	EM69128
	Solenoid valve assembly	EM69129
	Steam thermoblock	EM69131
Page12, # 6	Coffee water pump assembly	EM69132
Page 12, # 1, 2	Brass fitting for S2 valve	EM69132B
Page 12, # 3, 4	S2 valve & oring	EM69132C
	Dial actuator	EM69134
	Screw for actuator	EM69135
Page 5, # 33	Hot water and steam dial knob	EM69138
	Hot water arm	EM69139
	Hot water steam valve assembly mount screw	EM69140
	T-bar brass fitting	EM69143
	Anti-drip silicon valve	EM69147
	Long wire microswitch for hot water dial	EM69148
	Short wire microswitch for steam dial	EM69149
	Cable ties	EM69150
	Baffle	EM69152
Page 8, # 24	Screw for thermoblock	EM69153
Page 5, # 38	Warming plate	EM69155
Page 5, # 13	Drip tray connector	EM69156
Page 6, # 1	Filter cradle wire for EM69103	EM69157
Page 8, #2	Shower Head Plate	EM69158
	Single Pour Spout	EM69160
	Dual Pour Spout	EM69161
	Dumping Nozzle Brass Insert	EM69162
Page 9, # 8	Steam Chamber Wire/Thermal Fuse Assembly	EM69163
	Coffee Block Wire/Thermal Fuse Assembly	EM69164
Page 14, # 5	Water Tank Valve Body	EM69165
Page 14, # 4	Water Tank Valve Rubber Ring	EM69166
	Spacer for Brew Head Seal	EM69167
Page 13, #10,14	New steam nozzle EM6900/6910/6910R	EM69168
Page 5, #35	New tamp EM6900/6910/6910R	EM69169
Page 4, #3	Flow meter assembly EM6900/6910/6910R	EM69170

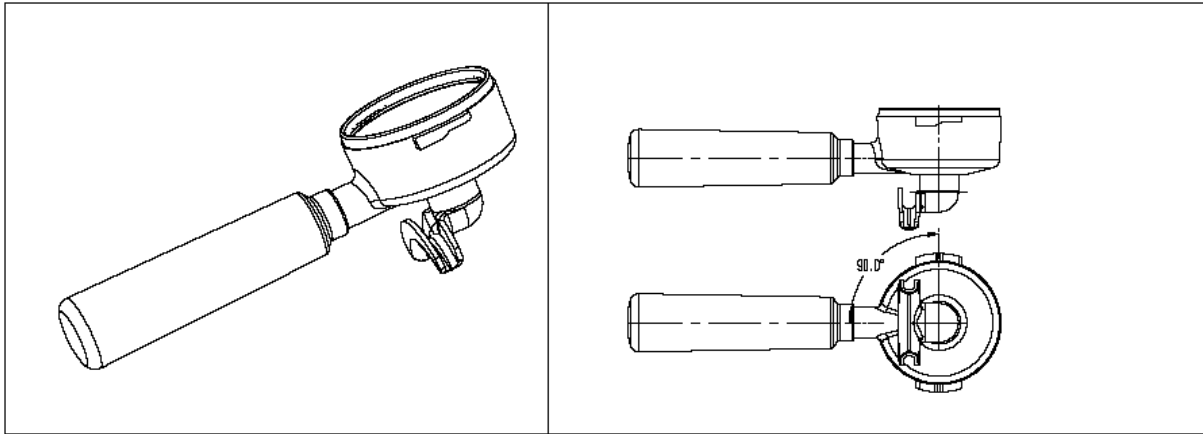
EXPLODED VIEW DRAWING



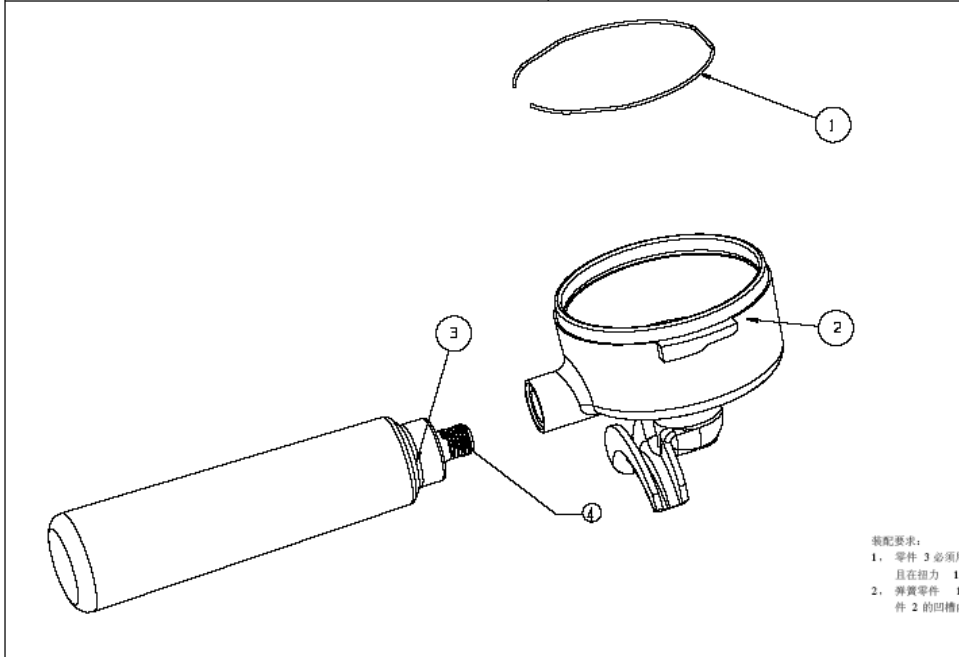
NO.	PART NO.	PART NAME	MATERIAL	QTY
1	31-4021	M4*22		4
2	C23-2009-G	COFFEE PUMP SUPPORT		2
3	S0-4002	FLOW METER ASSY		1
4	38-5083	FLOWMETER SPRING		2
5	33-10D1	M3		1
6	C23-1114VF-G	MAIN HOUSING BRACKET		1
7	C23-745B-G	MAIN HOUSING BRACKET CONNECTOR		1
8	S0-40D1	PRESSURE GAUGE		1
9	C23-2007VC_G	PRESSURE GAUGE BRACKET		1
10	35-1022	BLIND RIVET 1/8 x 1/4"		3
11	C3-9019	PRESSURE GAUGE PLASTIC BRACKET		1
12	35-1037	BLIND RIVET DIA3.5*10MM		8
13	34-1015	SLEEVE		4
14	18-B1D3	SMALL PUMP ASSY		1
15	C23-2010-G	SMALL PUMP SUPPORT		2
16	18-B1D2	THERMICHAMBER ASSY		1
17	18-B1D5	WATER PUMP ASSY		1
18	34-2010	spring sleeve		4
19	81-1066A-170	SILICOM TUBE		1
20	C23-2245	COPPER TUBE		1
21	D3-3008	CABLE TIE		2
22	45-7038	STEAM ADAPTOR O RING		1
23	31-1142	M3.D SCREW		2

DOCUMENT NO.	(11/20)	SCALE	1:2	UNIT	mm
PART NO.	81-8109	DESIGNED BY			
DRAWING OR PART NAME	MAIN HOUSING ASSY	DATE			
		DRAWN BY			
		DATE			
MATERIAL		CHECKED BY			
		DATE			
FINISH		APPROVED BY			
		DATE			
FILE DIR					



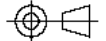


REVISION				
Mark	Description	Initiated by	Approved by	Date
A	PERFECTION RELEASE			

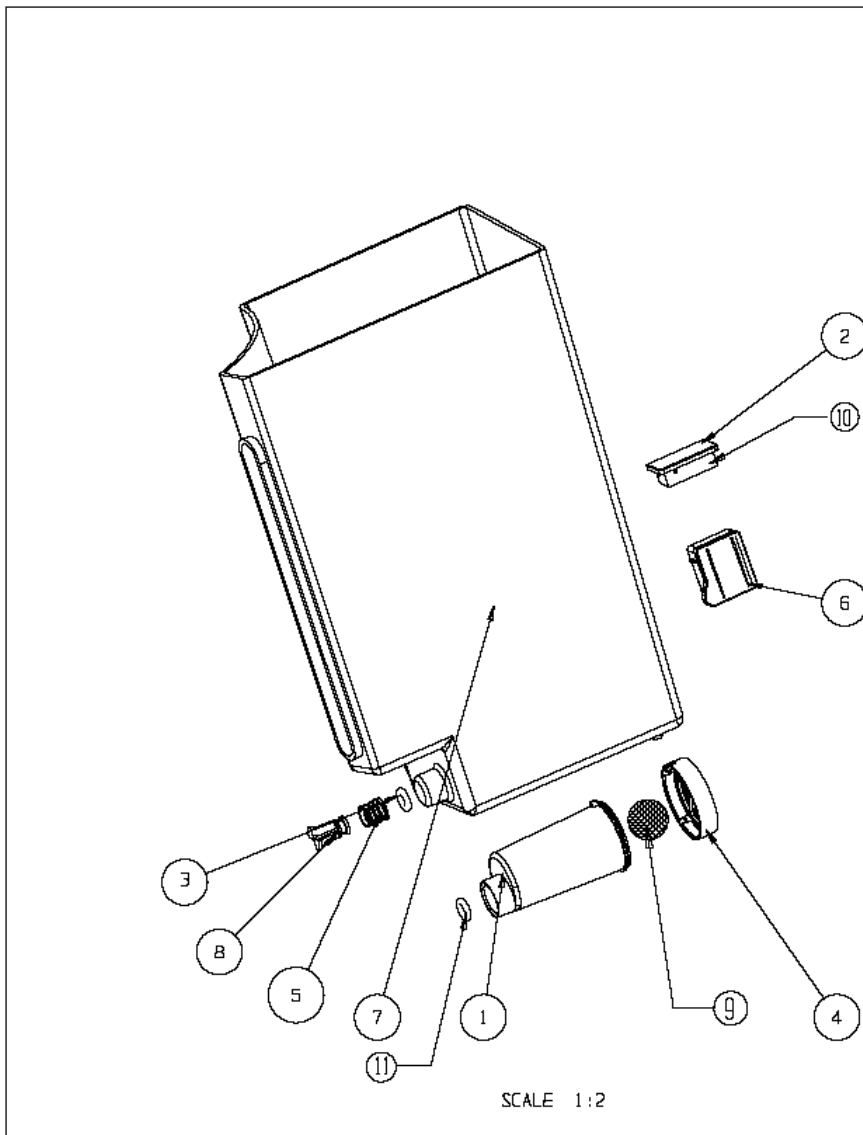


NO.	PART NO.	PART NAME	MATERIAL	QTY
1	C23-745310-SS	FILTER CRADLE WIRE	SUS 304(D1.6MM)	1
2	17-8648-2	DUAL SPOUT ASSY	BRASS (HS9)	1
3	C3-4001	HANDLE	PHENOLIC	1
3.1	C23-8000	HANDLE INSERT	BRASS(HS9)	1
4	00-3624	LOCTITE 22270	---	D.16

DOCUMENT NO.	17-8630	SCALE	1:1	UNIT	mm
PART NO.	17-8630	DESIGNED BY	DATE	KIANG	29/09/06
DRAWING OR PART NAME	FILTER CRADLE ASS'Y	DRAWN BY	DATE	KIANG	29/09/06
MATERIAL	---	CHECKED BY	DATE	ROBERT	29/09/06
FINISH	---	APPROVED BY	DATE	ROBERT	29/09/06

FILE DIR	17-8630_00_060930
 G.E.M Corporation LTD.	

装配要求:
 1. 零件 3 必须用螺纹胶 (零件 4) 紧密地与零件 2 固定, 且在扭力 10KG 下不可松脱
 2. 弹簧零件 1 装配时, 必须保证所有弧面都处于零件 2 的凹槽内

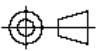


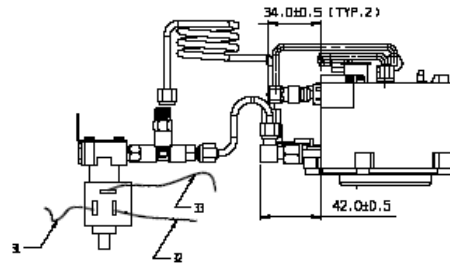
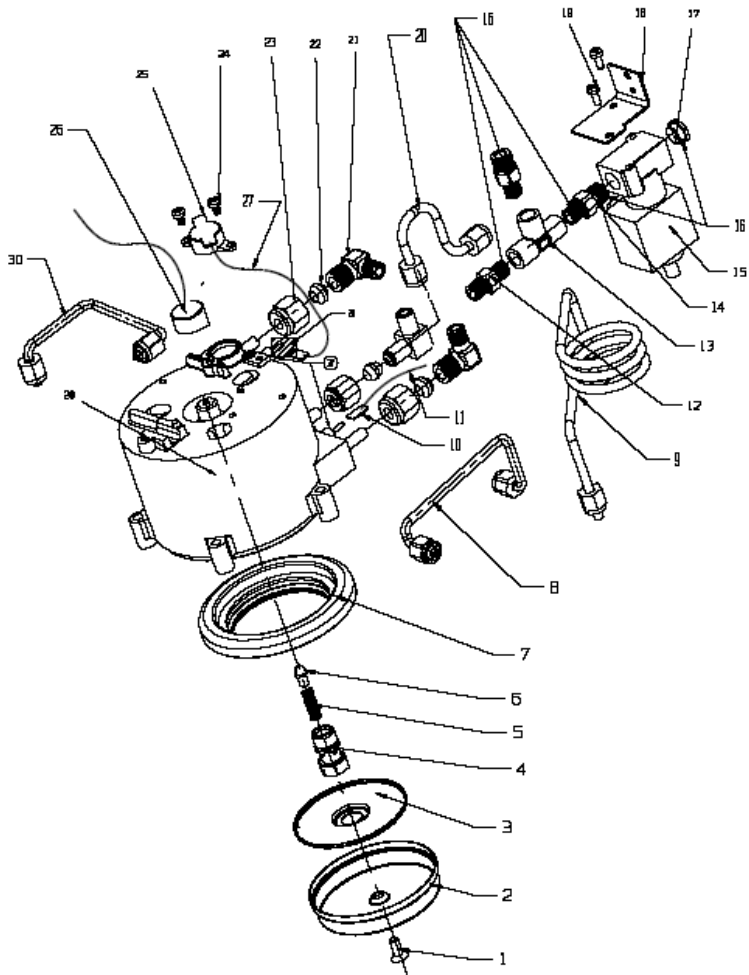
装配要求:

1. 水箱装配好后, 加入 3L 水放置 2 小时不可出现漏水现象
2. 装配零件 2 时, 必须先在其装配面上涂上胶水零件 10, 然后用紫光灯进行烘干处理, 装配后, 该零件在正常跌落时不可松脱

REVISION				
Mark	Description	Initiated by	Approved by	Date
1	PULLDOWN RELEASE			

NO.	PART NO.	PART NAME	MATERIAL	QTY
1	Q3-8003	FILTER BODY	PP(BEHALS HF7054)	1
1.1	00-3454-023	MESH	POLYESTER DP 24T	1
2	Q3-9015	WATER TANK SENSOR COVER	PA667 ABS	1
3	45-8038	WATER TANK VALVE O RING	SILICON(RD 004-51)	1
4	Q3-8031	UPPER FILTER COVER	PP(BEHALS HF7054)	1
4.1	00-3465-043	MESH	POLYESTER DP 24T	1
5	38-5068-1	WATER TANK VALVE SPRING	SS 304	1
6	18-1127	WATER LEVEL SENSOR ASSY	—	1
7	Q3-6102	WATER TANK	ABS(PA 750)	1
8	Q3-8012	WATER TANK VALVE	NYLON 66 13005	1
9	00-3458A	FILTER CATION	AC LUBRIFORM SH	0.026
10	00-3533	GLUE ABS	GLUE ABS BOTTLE BONDOR	0.19M
11	45-8008	O RING	SILICON (RD 004-51)	1

DRAWING NO.	17-8634	SCALE	1:2	UNIT	mm
PART NO.	17-8634	DESIGNED BY DATE	ICANG	28/05/06	
DRAWING OR PART NAME	WATER TANK ASSY 'Y'	DRAWN BY DATE	ICANG	28/05/06	
MATERIAL	—	CHECKED BY DATE	ROBERT	29/06/06	
FINISH	—	APPROVED BY DATE	ROBERT	28/05/06	
FILE DIR	17-8634_D0_DECK30				
					G. E. W Corporation LTD.



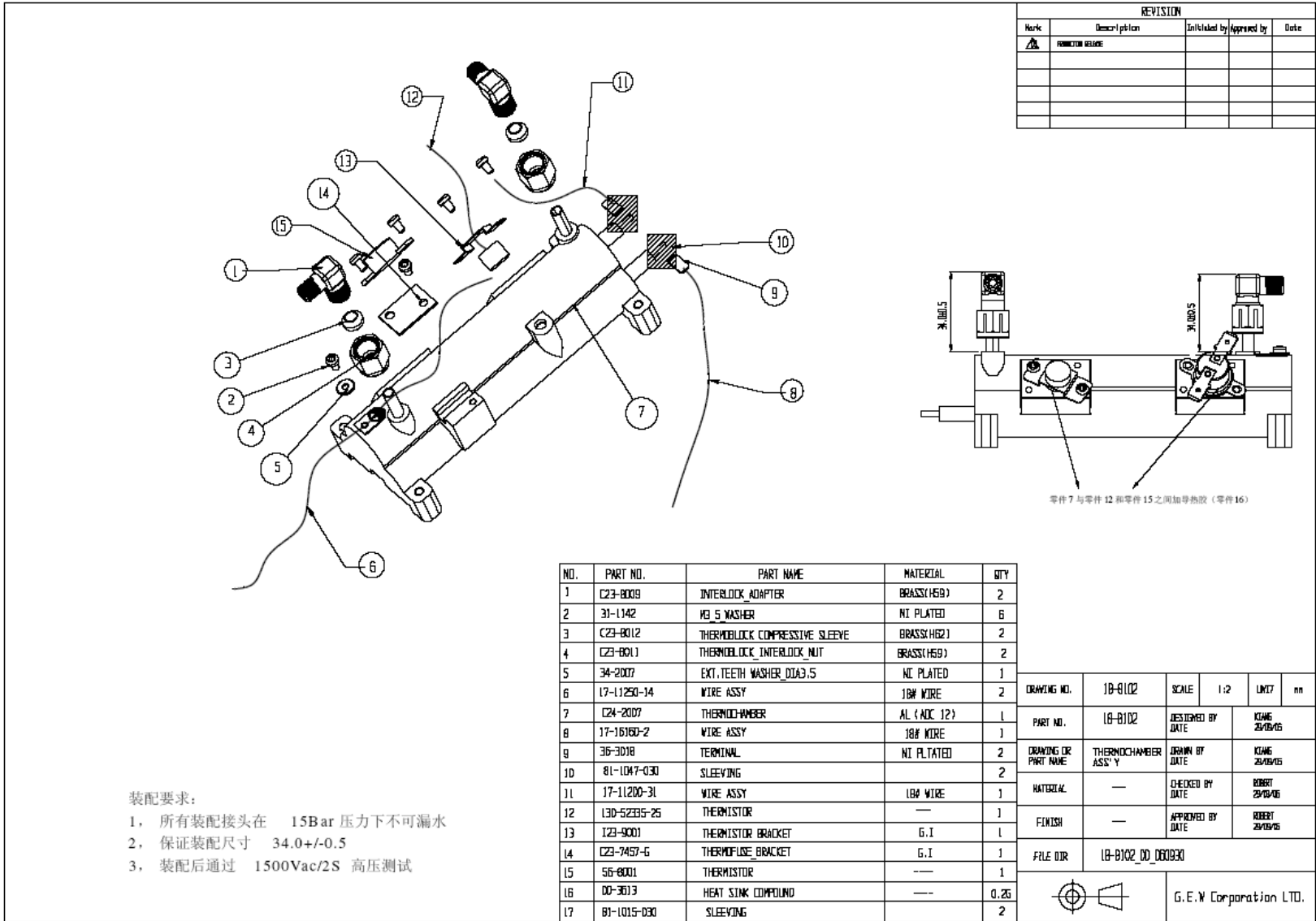
REVISION				
Mark	Description	Initiated by	Approved by	Date
▲	FUNCTION CHANGE			

NO.	PART NO.	PART NAME	MATERIAL	QTY
1	30-1201	SHDL SEAL SCRM	SLR 304	1
2	C20-002M	SHDRR HEAD PLATE	SLR 304	1
3	C20-003M	SPRRR SHDRR HEAD PLATE	SLR 304	1
4	C20-010M	SCRM	BRASS H50	1
5,1	30-000-000-00 30-000-000-00	WTRC WRT SPONGE	SLR 304	5
6	45-1004	WTRC WRT	SLR 304	1
7	45-0205	SHDRR HEAD SEAL	SL 310M	1
8	C20-002-1	COPPER TUBE	COPPER	1
8	C20-002	THERMOLOCK OUTLET WATER TUBE	COPPER	1
10	30-0118	FERROCAL	NO PLATED	2
11	17-1140D-3	WTRC ASBY	100 WTRC	1
12	C20-0100	NO NO ADAPTER	BRASS H50	1
13	C20-010M	NO ADAPTER 3 MP	BRASS H50	1
14	C20-0120	NO 1-1 ADAPTER	BRASS H50	2
15	50-0002	SOLENOID VALVE	CU	1
16	50-0004	LACTITE 2220	LACTITE	0.50
17	C20-0003	SOLENOID VALVE BOLT	BRASS H50	1
18	C20-0004	SOLENOID VALVE BRACKET	S.T	1
19	30-1104	IC 7 WASHER	NO PLATED	2
20	C20-002	SOLENOID COPPER TUBE	COPPER	1
21	C20-000	OUTLET LOCK ADAPTER	BRASS H50	1
22	C20-0012	THERMOLOCK COMPRESSIVE SLRONE	BRASS H50	3
23	C20-0011	THERMOLOCK THERMOLOCK MUT	BRASS H50	3
24	31-1342	IC 9 WASHER	IC FLUTER	2
25	50-0000	THERMOLOCK 3 LUGS	---	1
26	130-0000-25	THERMOLOCK	---	1
27	17-1120D-31	WTRC ASBY	300 WTRC	1
28	C20-0008	THERMOLOCK OVERSIST	BLK HD 123	1
29	81-1007-008	SLRSPONGE	---	2
30	C20-0008-1	THERMOLOCK OUTLET TUBE	COPPER	1
31	17-1110D-20	WTRC ASBY	100 WTRC	1
32	17-1130D-31	WTRC ASBY	100 WTRC	1
33	17-1120D-32	WTRC ASBY	100 WTRC	1
34	30-0013	HEATER TANK COMPON	---	0.25
35	81-1015-000	SLRSPONGE	---	2

DRAWING NO.	18-8101	SCALE	1:2	UNIT	mm
PART NO.	18-8101	DESIGNED BY	---	DATE	KIANG 29/08/05
DRAWING OR PART NAME	THERMOLOCK ASS'Y	DRAWN BY	---	DATE	KIANG 29/08/05
MATERIAL	---	CHECKED BY	---	DATE	ROBERT 29/08/05
FINISH	---	APPROVED BY	---	DATE	ROBERT 29/08/05


装配要求:

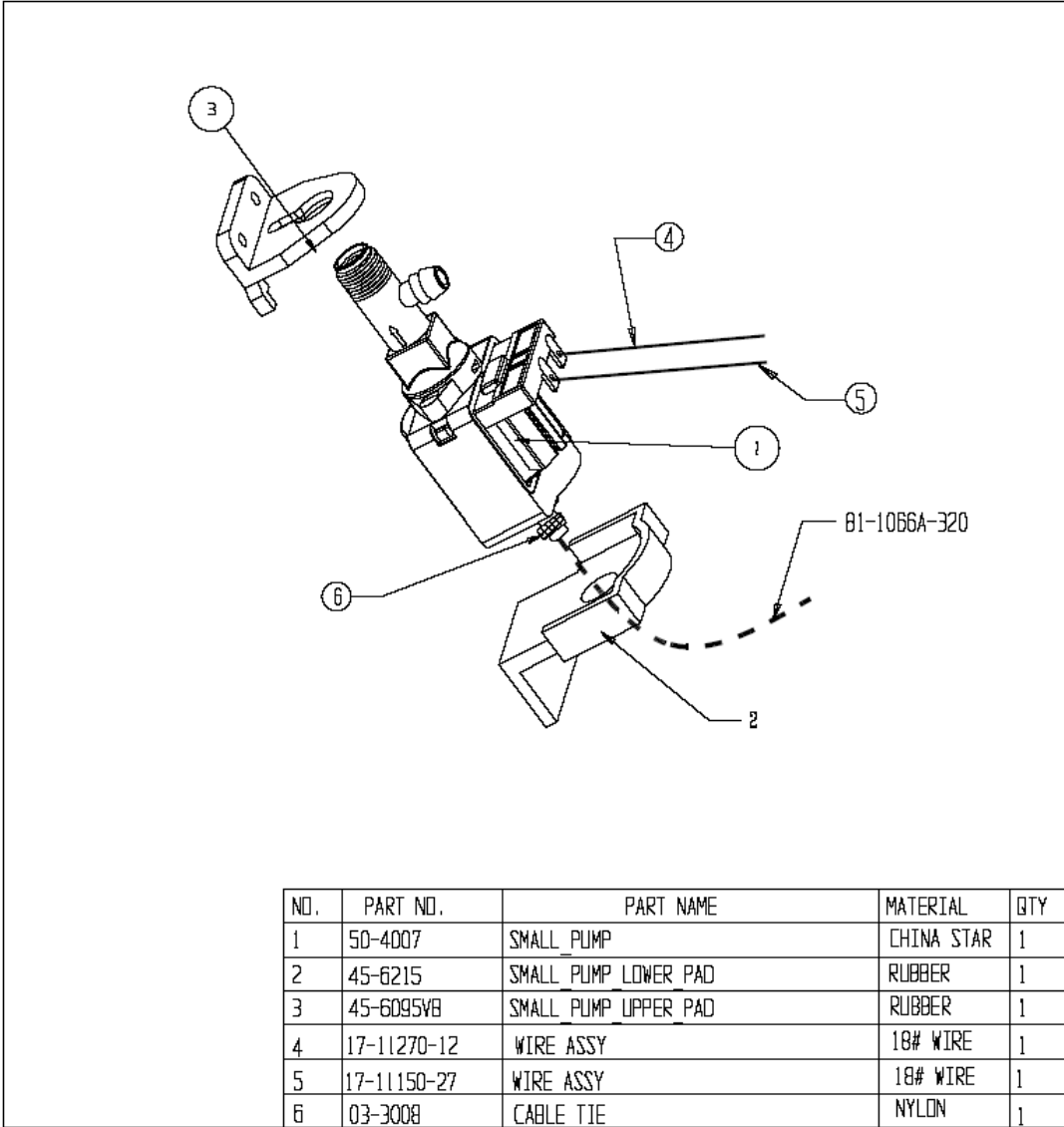
1. 所有接头在 15Bar 压力下不可漏水



- 装配要求:
1. 所有装配接头在 15Bar 压力下不可漏水
 2. 保证装配尺寸 34.0+/-0.5
 3. 装配后通过 1500Vac/2S 高压测试

NO.	PART NO.	PART NAME	MATERIAL	QTY
1	C23-8009	INTERLOCK_ADAPTER	BRASS(H59)	2
2	31-1142	W3.5 WASHER	NI PLATED	6
3	C23-8012	THERMOBLOCK_COMPRESSIVE_SLEEVE	BRASS(H62)	2
4	C23-8011	THERMOBLOCK_INTERLOCK_NUT	BRASS(H59)	2
5	34-2007	EXT. TEETH WASHER DIA3.5	NI PLATED	1
6	17-11250-14	WIRE ASSY	18# WIRE	2
7	C24-2007	THERMOCHAMBER	AL (A1C 12)	1
8	17-16160-2	WIRE ASSY	18# WIRE	1
9	36-3018	TERMINAL	NI PLATED	2
10	81-1047-030	SLEEVING		2
11	17-11200-31	WIRE ASSY	18# WIRE	1
12	130-52335-25	THERMISTOR	---	1
13	123-9001	THERMISTOR BRACKET	G.I	1
14	C23-7457-6	THERMOFUSE BRACKET	G.I	1
15	56-8001	THERMISTOR	---	1
16	00-3613	HEAT SINK COMPOUND	---	0.25
17	81-1015-030	SLEEVING		2

DRAWING NO.	18-8102	SCALE	1:2	UNIT	mm
PART NO.	18-8102	DESIGNED BY DATE		ICANG	25/05/05
DRAWING OR PART NAME	THERMOCHAMBER ASS'Y	DRAWN BY DATE		ICANG	25/05/05
MATERIAL	---	CHECKED BY DATE		ROBERT	25/05/05
FINISH	---	APPROVED BY DATE		ROBERT	25/05/05
FILE DIR	18-8102_DD_000930				
					G. E. Y Corporation LTD.

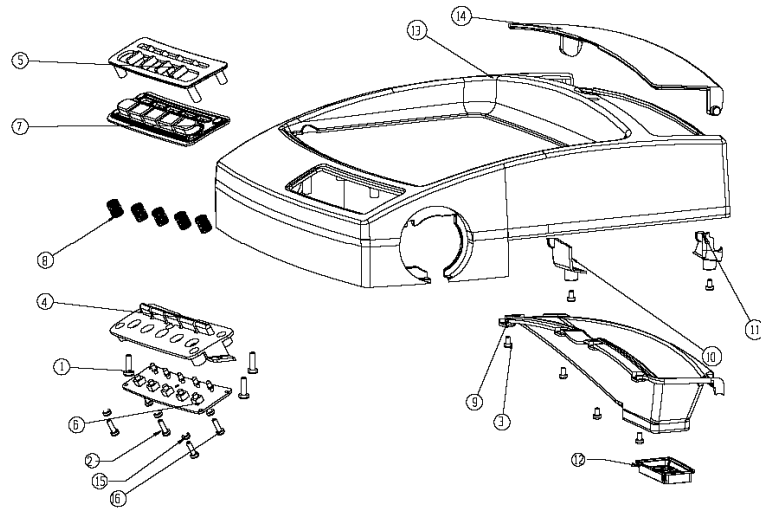


REVISION				
Mark	Description	Initiated by	Approved by	Date
1	PRODUCTION RELEASE			

NO.	PART NO.	PART NAME	MATERIAL	QTY
1	50-4007	SMALL_PUMP	CHINA STAR	1
2	45-6215	SMALL_PUMP LOWER PAD	RUBBER	1
3	45-6095VB	SMALL_PUMP UPPER PAD	RUBBER	1
4	17-11270-12	WIRE ASSY	18# WIRE	1
5	17-11150-27	WIRE ASSY	18# WIRE	1
6	03-3008	CABLE TIE	NYLON	1

DOCUMENT NO.	18-B103	SCALE	1:1	UNIT	m
PART NO.	18-B103	DESIGNED BY DATE	KIANG 30/09/06		
DRAWING OR PART NAME	STEAM PUMP ASS'Y	DRAWN BY DATE	KIANG 30/09/06		
MATERIAL	---	CHECKED BY DATE	ROBERT 30/09/06		
FINISH	---	APPROVED BY DATE	ROBERT 30/09/06		
FILE DIR	18--8103_00_060930				
		G. E. W Corporation LTD.			

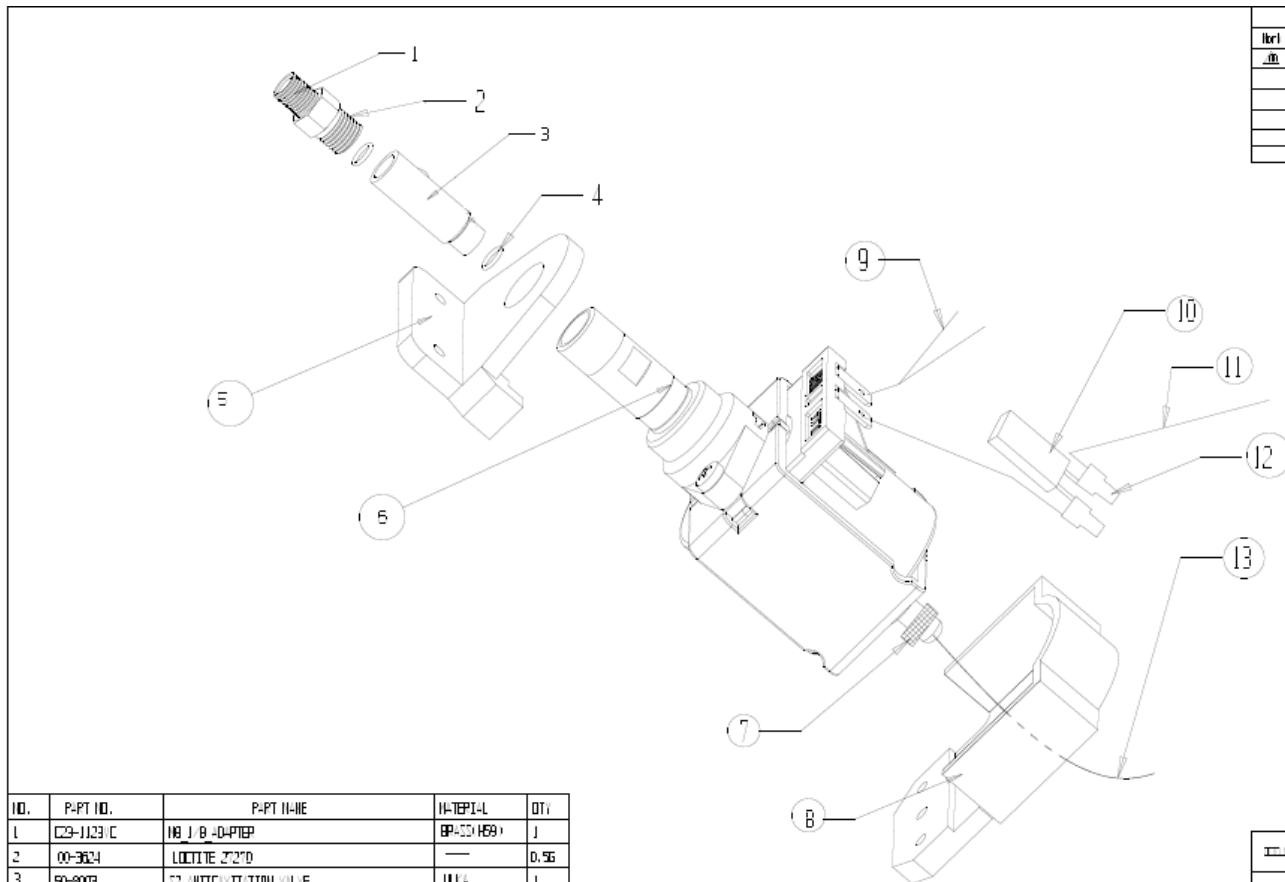
REVISION				
Mark	Description	Initiated by	Approved by	Date
A	PRODUCTION RELEASE			



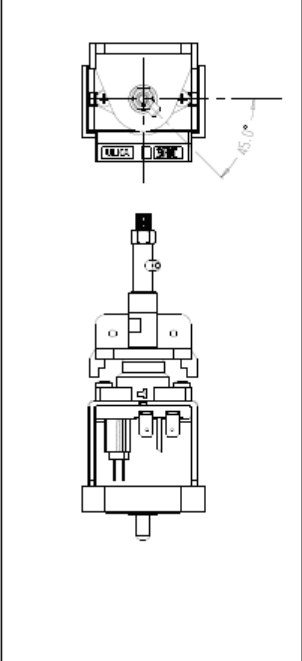
- 装配要求:
1. 顶盖门 14 和按板 5 装配时要与零件 13 连接弧面较顺, 无明显断差
 2. 顶盖门 14 装配后转动灵活, 与其它零件无干涉

NO.	PART NO.	PART NAME	MATERIAL	QTY
1	31-1070	M3_SXB	NI PLATED	3
2	31-3004	M3KB_CDARSC	SUS 304	1
3	31-1107	M3K5	NI PLATED	6
4	C3-8002	CONTROL_PANEL_BRACKET	PC(MARRELLIN 2605 550115)	1
5	C3-3001	CONTROL_PANEL_COVER	PA657 ABS	1
6	17-8020	CONTROL_PANEL_PCB	---	1
7	45-6115	CONTROL_PANEL_RUBBER_PAD	SILICON	1
8	38-5073	COMPRESSION_SPRING	MUSIC WIRE	5
9	c3-8002	FUNNEL	PP(BUREALIS HF700SA)	1
10	C3-8001	FUNNEL_BRACKET_LEFT	PP(BUREALIS HF700SA)	1
11	C3-8018	FUNNEL_BRACKET_RIGHT	PP(BUREALIS HF700SA)	1
12	C3-8027	FUNNEL_FILTER	PP(BUREALIS HF700SA)	1
12.1	00-3454-040	MESH	POLYESTER	1
13	C24-1111	TOP_CASTING	AL CASTING (A.302)	1
14	C24-1110	TOP_CASTING_LID	AL CASTING (A.302)	1
15	34-7007	SLEEVING	FIBRE	5
16	31-1100	SCREW	NI PLATED	4

DRAWING NO.	18-8104	SCALE	1:2	UNIT	mm
PART NO.	18-8104	DESIGNED BY	KIANG 28/09/06		
DRAWING OR PART NAME	TOP CASTING ASS'Y	DRAWN BY	KIANG 28/09/06		
MATERIAL	---	CHECKED BY	ROBERT 28/09/06		
FINISH	---	APPROVED BY	ROBERT 28/09/06		
FILE DIR	18-8104_00_060930				
					G.E.W Corporation LTD.

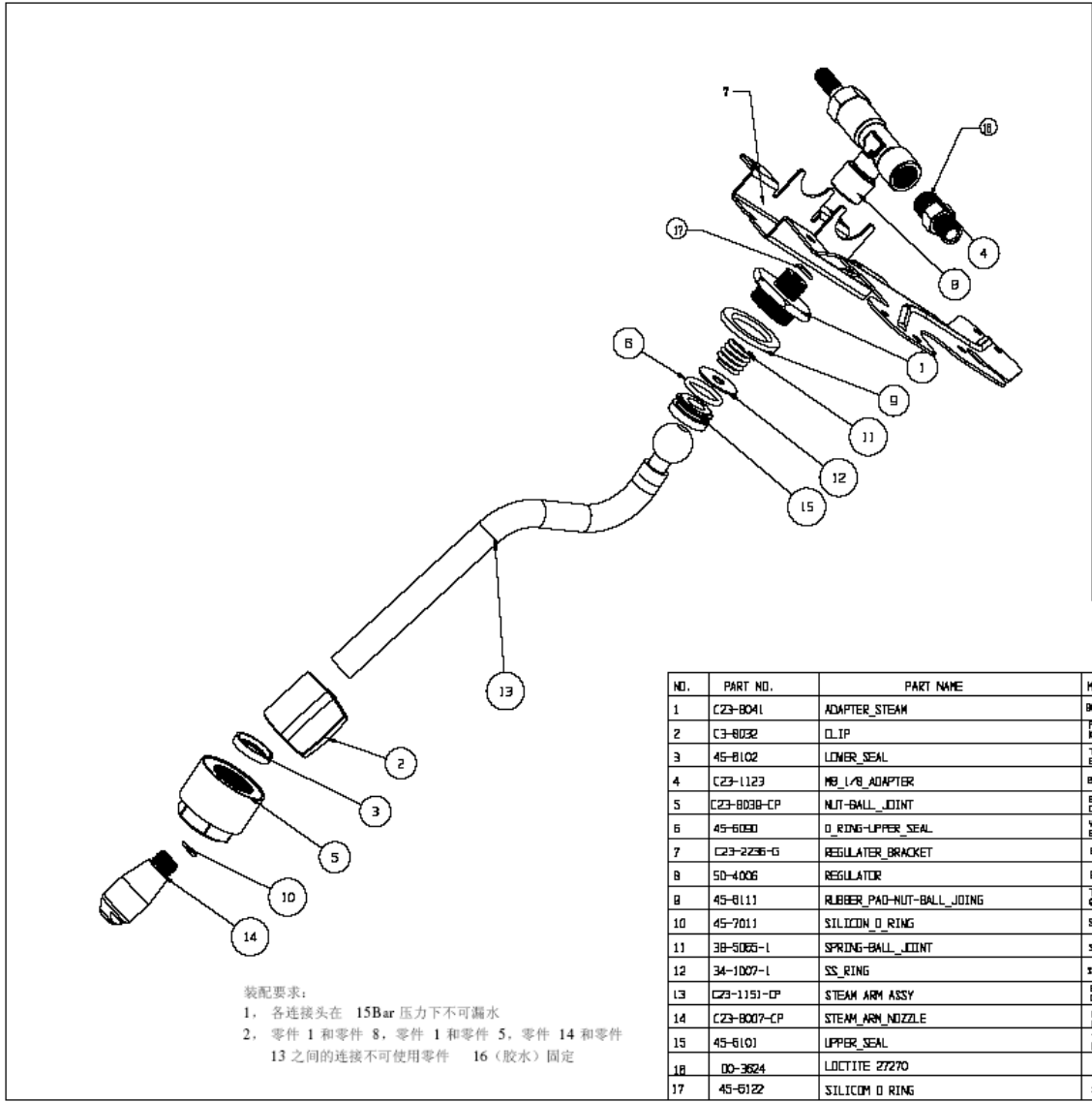


REVISION				
Rev#	Description	Initiated by	Approved by	Date
01	PRODUCTION			



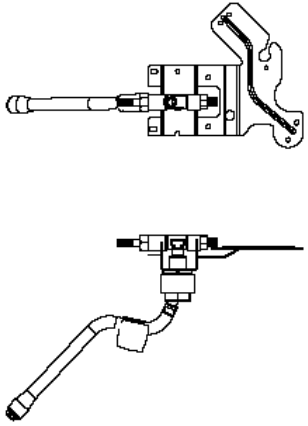
ID.	P-PRT NO.	P-PRT NAME	MATERIAL	QTY
1	03-1123-C	IMP J B -D-PREP	BRASS 600	1
2	00-3624	LOCUTITE 23270	---	0.56
3	50-8003	22 ANTICAVITATION VALVE	WU4	1
4	45-6177	SILICON O RING	SILICON	2
5	45-6098	WATER PUMP UPPER P-0	PURBEP	1
6	50-4003	WATER_PUMP	WU4 EPS	1
7	03-3008	CABLE TIE	NYLON	1
8	45-6097	WATER PUMP LOWER P-0	PURBEP	1
9	17-12160-19	WIPE Assy	18# WIPE	1
10	56-9017	PUMP THERMOSTAT 1/5 DEG/EE	---	1
11	17-11070-18	WIPE Assy	18# WIPE	2
12	36-1006	CLOSED END CONNECTOR H-03 10SC 600	---	2
13	01-1066-130	SILICON PURBEP TUBE	SILICONE	1

CONTROL NO.	17-8627	SOLE	LC	UCT	IN
PART NO.	17-8627	DESIGNED BY			
PROJ NO.	WATER PUMP	DRAWN BY			
MATERIAL	---	CHECKED BY			
PRICE	---	APPROVED BY			
FILE NO.	17-8627_00_070518				
		S.E.W Corporation LTD.			



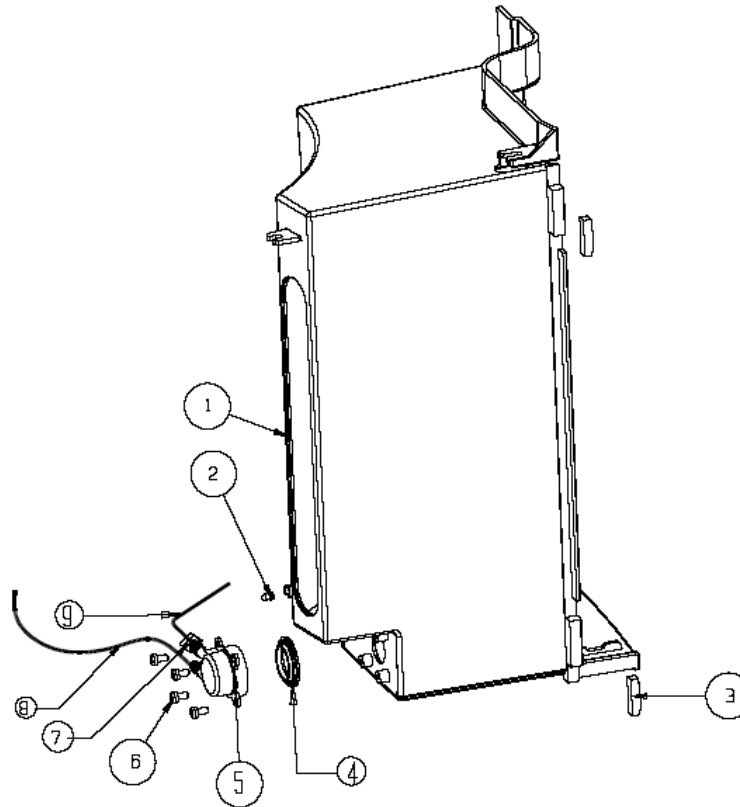
装配要求:
 1. 各连接头在 15Bar 压力下不可漏水
 2. 零件 1 和零件 8, 零件 1 和零件 5, 零件 14 和零件 13 之间的连接不可使用零件 16 (胶水) 固定

REVISION				
Mark	Description	Initiated by	Approved by	Date
A	PULLDOWN RELEASE			



NO.	PART NO.	PART NAME	MATERIAL	QTY
1	C23-8041	ADAPTER_STEAM	BRASS HB1	1
2	C3-8032	CLIP	PA66-50 KUREA	1
3	45-8102	LOWER SEAL	TEFLON 80%-5 0.80	1
4	C23-1123	MB_L/B_ADAPTER	BRASS HB1	1
5	C23-8038-CP	NUT-BALL_JOINT	BRASS HB1 CHROME PLATED	1
6	45-6080	O_RING-UPPER SEAL	VITON 80%-5 O-RING	1
7	C23-2236-G	REGULATOR BRACKET	S.S STEEL	1
8	50-4006	REGULATOR	BRASS HB1	1
9	45-8111	RUBBER_PAD-NUT-BALL_JOINT	TEFLON 80%-5 0.80	1
10	45-7011	SILICOM O_RING	SILICOM	1
11	38-5065-L	SPRING-BALL_JOINT	SUS 304	1
12	34-1007-L	SS_RING	SUS 304	2
13	C23-1151-CP	STEAM ARM ASSY	BRASS HB1 CHROME PLATED	1
14	C23-8007-CP	STEAM_ARM_NOZZLE	BRASS HB1 CHROME PLATED	1
15	45-6101	UPPER SEAL	TEFLON 80%-5 0.80	1
16	00-3624	LOCTITE 27270	---	0.16
17	45-6122	SILICOM O_RING	SILICOM	1

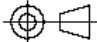
DOCUMENT NO.	18-8107	SCALE	3:10	UNIT	mm
PART NO.	18-8107	DESIGNED BY	DATE	KIANG 28/08/06	
DRAWING OR PART NAME	HOT WATER ARM ASSY	DRAWN BY	DATE	KIANG 28/08/06	
MATERIAL	---	CHECKED BY	DATE	ROBERT 28/09/06	
FINISH	---	APPROVED BY	DATE	ROBERT 28/09/06	
FILE DIR	18-8107_DD_080830				
			G.E.W Corporation LTD.		

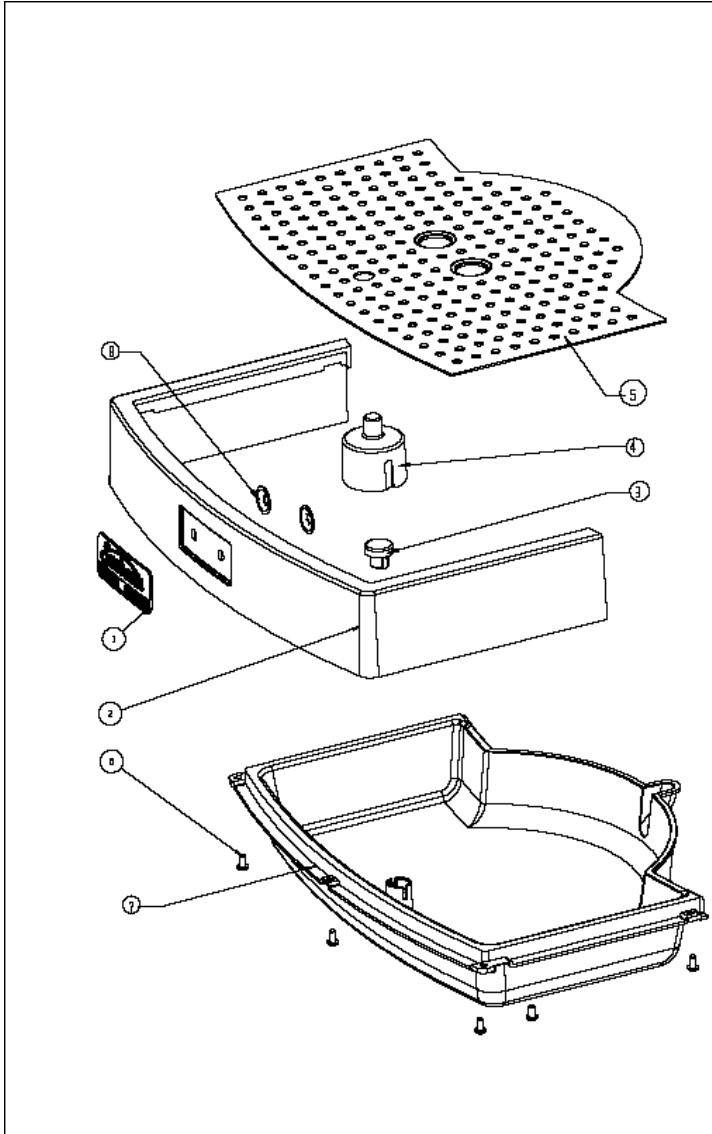


REVISION				
Mark	Description	Initiated by	Approved by	Date
△	PULLDOWN RELEASE			

装配要求:
 1. 零件 8 和 9 必须装配在零件 1 上的槽内, 并且装配好后要用热熔胶固定。
 2. 零件 2 必须正确地装配在零件 1 上的圆环内, 不可倾斜或凸出

NO.	PART NO.	PART NAME	MATERIAL	QTY
1	C3-8028	WATER_TANK_SURROUND	PP(CHEMRES HF70D5A)	1
2	18-7002	LED_ASSY	---	1
3	C23-B047	MAGNET	FERRITE	2
4	45-6129	WATER_TANK_VALVE_RUBBER_RING	SILICON(40% \pm 5 DURS)	1
5	C3-8020	WATER_TANK_VALVE_BODY	PP(CHEMRES HF70D5A)	1
6	31-3001	MESH_COARSE	NI PLATED	4
7	03-3008	CABLE_TIE	NYLON	2
8	81-1088A-23D	SILICON_RUBBER_TUBE	SILICON 70% \pm 5 DURS	1
9	81-1088A-32D	SILICON_RUBBER_TUBE	SILICON 70% \pm 5 DURS	1

DRAWING NO.	18-8108	SCALE	1:2	UNIT	mm
PART NO.	18-8108	DESIGNED BY	KWG 28/09/06		
DRAWING OR PART NAME	WATER TANK SURROUND ASS'Y	DATE	DRAWN BY	KWG 28/09/06	
MATERIAL	---	CHECKED BY	ROBT 28/09/06		
FINISH	---	APPROVED BY	ROBT 28/09/06		
FILE DIR	18-8108_00_06030				
		G. E. W Corporation LTD.			

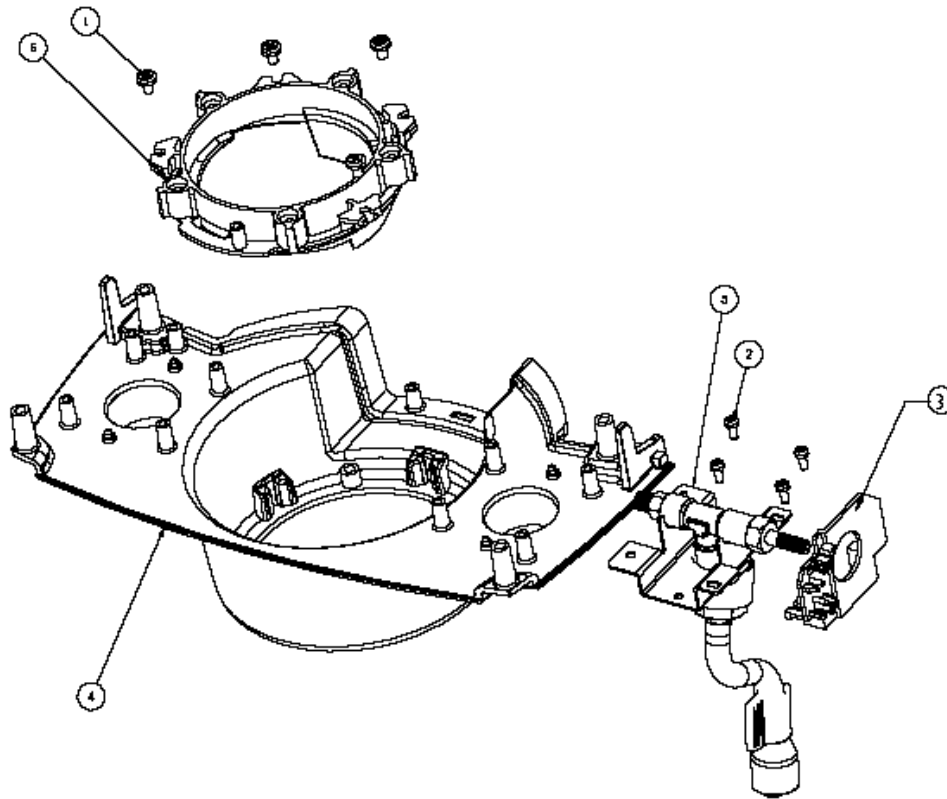


REVISION				
Mark	Description	Initiated by	Approved by	Date
A	FUNCTION RELEASE			

装配要求:
 1. 零件 1 装配后不可松动。
 2. 零件 3 装配要求紧密配合, 不可轻易松动

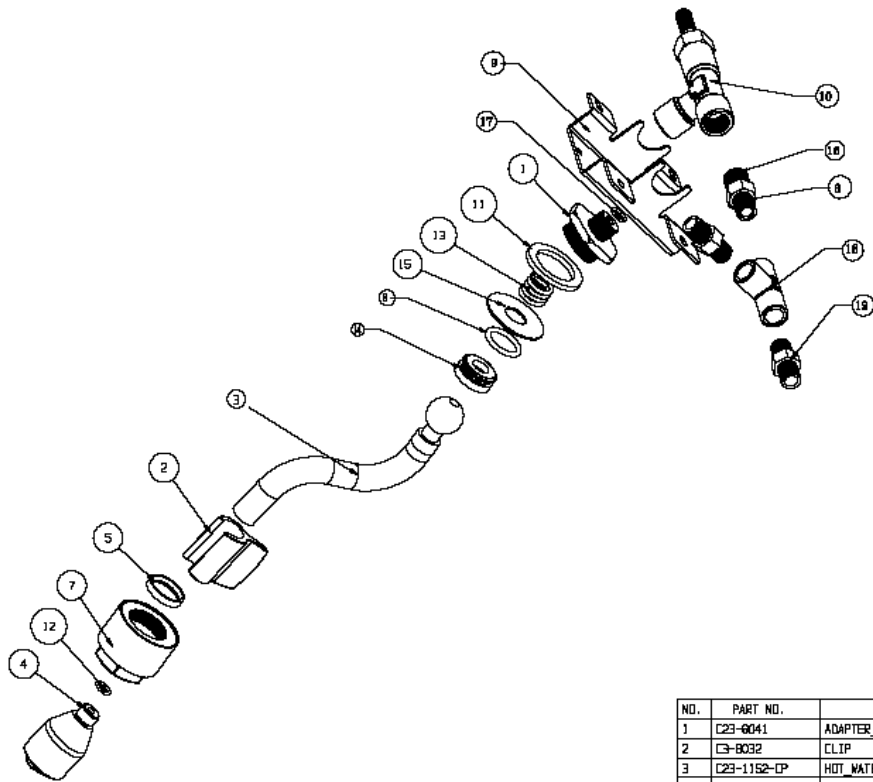
NO.	PART NO.	PART NAME	MATERIAL	QTY
1	20-2033	BRIDGE	ZP ZINC CASTING	1
2	C24-1109	DRIP-TRAY-SURROUND	AL CASTING& 300	1
3	C3-9020	DRIP-TRAY COVER	PPRORONALIS HPT0651	1
4	C3-9021	DRIP-TRAY FLOAT	PPRORONALIS HPT0651	1
5	C23-2008	DRIP-TRAY PLATE	SIS 420	1
6	31-1202	M3 6 FLAT	SIS 304	5
7	C3-6025	DRIP-TRAY	PPRORONALIS HPT0651	1
8	34-7016	SELF-LOCK WASHER	SIS 304	2

DRAWING NO.	18-8110	SCALE	1:2	UNIT	mm
PART NO.	18-8110	DESIGNED BY	KWANG	DATE	25/05/06
DRAWING OR PART NAME	DRIP-TRAY ASS'Y	DRAWN BY	KWANG	DATE	25/05/06
MATERIAL	---	CHECKED BY	ROBERT	DATE	25/05/06
FINISH	---	APPROVED BY	ROBERT	DATE	25/05/06
FILE DIR	18-8110_00_060830				
				G.E.W Corporation LTD.	



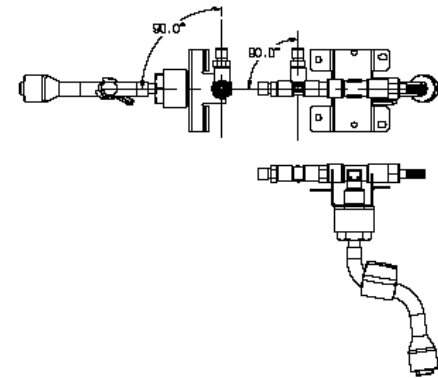
NO.	PART NO.	PART NAME	MATERIAL	QTY
1	31-1086	HA 6	NI PLATED	4
2	31-1141	HEX WASHER	NI PLATED	4
3	C3-9003	DIAL-BRACKET	PA66-G30 KINFA	1
4	C24-1100	FRONT CASTING	AL CASTINGA 3B10	1
5	17-8635	HOT WATER ARM ASSY	—	1
6	C24-3102-CP	SHOWER HEAD COLLAR	AL CASTINGA 3B10	1

DRAWING NO.	18-8111
PART NO.	18-8111
DRAWING OR PART NAME	FRONT CASTING ASS'Y
MATERIAL	—
FINISH	—
FILE DIR	18-8111_00_DEK



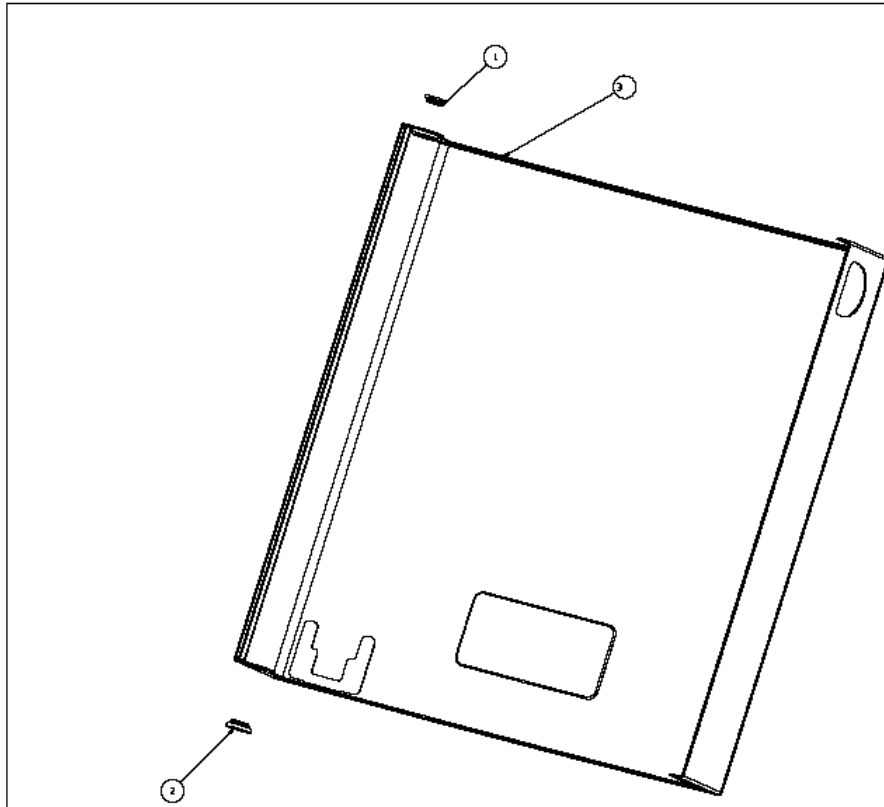
装配要求:
 1. 各连接头在 15Bar 压力下不可漏水
 2. 零件 1 和零件 10, 零件 4 和零件 3 之间的连接不可使用零件 16 (胶水) 固定

REVISION				
Mark	Description	Initiated by	Approved by	Date
A	PUBLICATION			



NO.	PART NO.	PART NAME	MATERIAL	QTY
1	C23-6041	ADAPTER_STEAM	BRASS (Z62)	1
2	C3-8032	CLIP	PA66-30%	1
3	C23-1152-CP	HOT WATER ARM	BRASS (Z62)	1
4	C23-1126-CP	HOT WATER SHOWER HEAD	BRASS (Z62)	1
5	45-8102	LOWER SEAL	EPDM	1
6	C23-1123	NO. 1/8 ADAPTER	BRASS (Z62)	1
7	C23-8039-CP	NUT-BALL JOINT	BRASS (Z62)	1
8	45-8080	O RING-UPPER SEAL	EPDM	1
9	C23-7456-G	REGULATOR BRACKET	ALUMINUM	1
10	50-4008	REGULATOR	ALUMINUM	1
11	45-8111	RUBBER PAD-NUT-BALL JOINT	EPDM	1
12	45-7011	SILICON O RING	EPDM	1
13	36-5065-1	SPRING-BALL JOINT	BRASS (Z62)	1
14	45-8101	UPPER SEAL	EPDM	1
15	34-1007-1	SS RING	BRASS (Z62)	2
16	00-3624	LOCTITE 27270		0.10
17	45-8122	SILICON O RING	EPDM	1
18	C23-1124	BRASS PART	BRASS (Z62)	1
19	C23-1116	BRASS PART	BRASS (Z62)	2

DOCUMENT NO.	18-8117	SCALE	3:10	UNIT	mm
PART NO.	18-8117	DESIGNED BY DATE	KIANG 28/08/08		
DRAWING OR PART NAME	HOT WATER ARM ASSY	DRAWN BY DATE	KIANG 28/08/08		
MATERIAL	---	CHECKED BY DATE	ROBERT 28/08/08		
FINISH	---	APPROVED BY DATE	ROBERT 28/08/08		
FILE DIR	B1-8117_00_080830				
		G.E.W. Corporation LTD.			

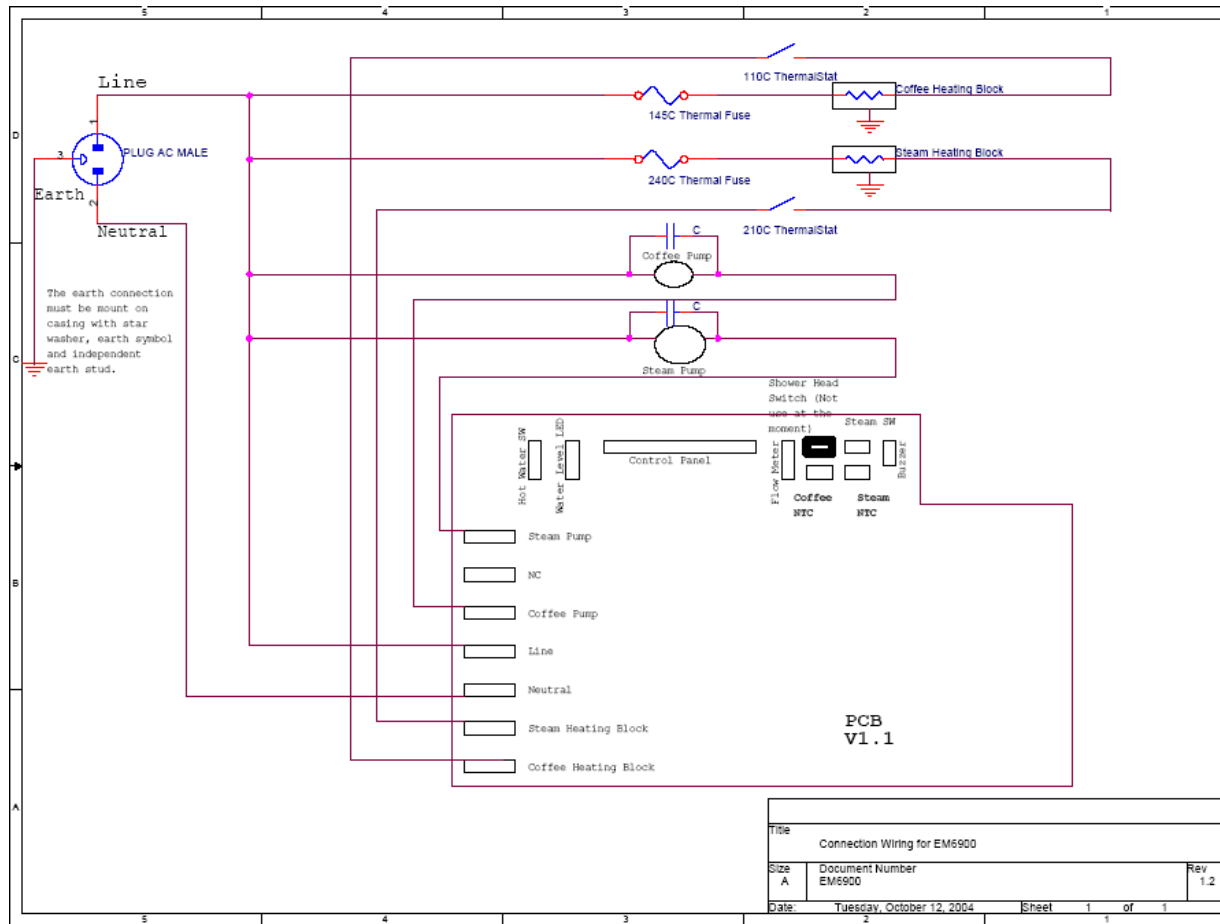


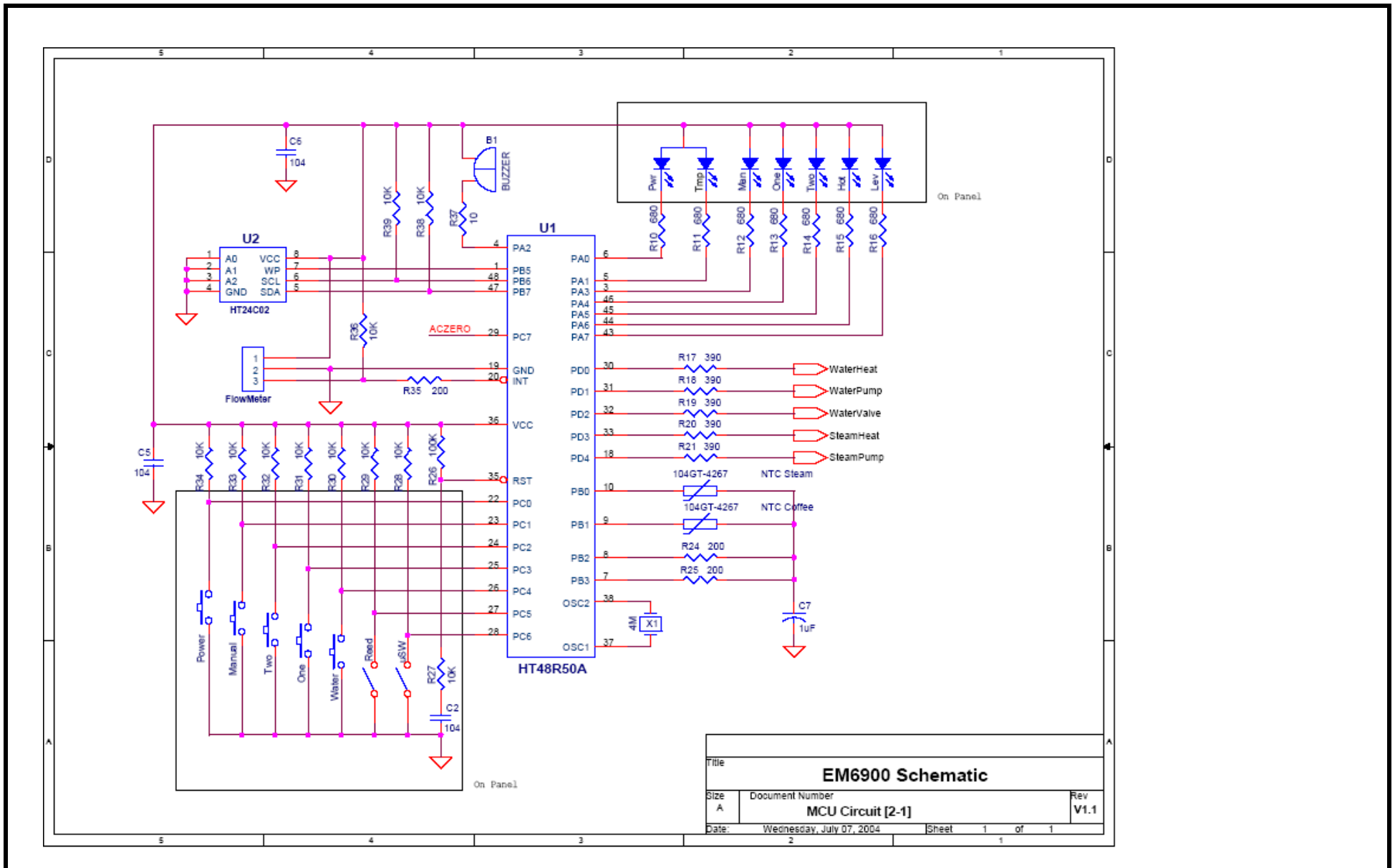
REVISION				
Mark	Description	Initiated by	Approved by	Date
△	PUBLICATION RELEASE			

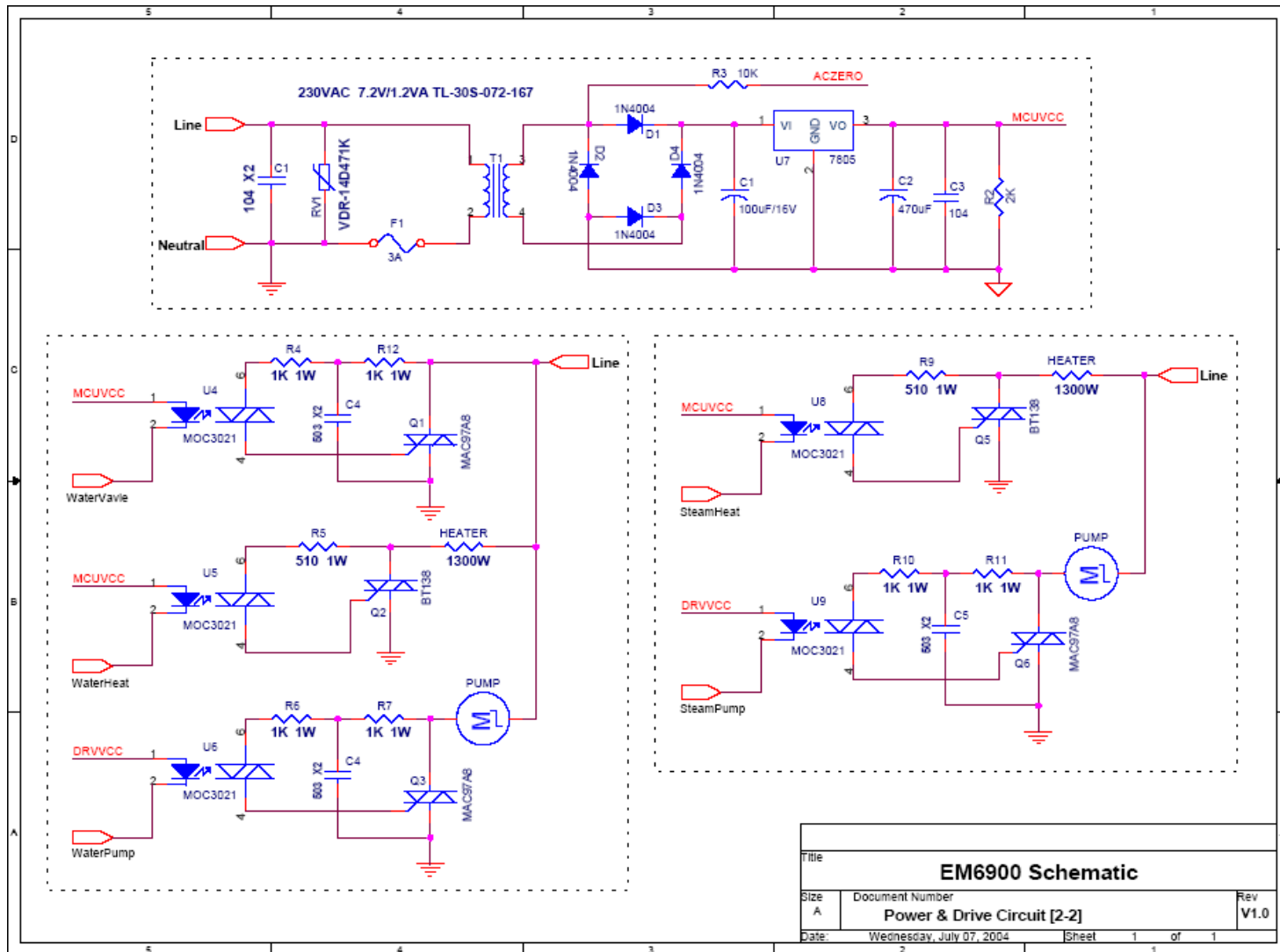
DOCUMENT NO.	18-8125	SCALE	1:1	UNIT	mm
PART NO.	18-8125	DESIGNED BY	DATE	KIANG 29/09/06	
DRAWING OR PART NAME	REAR DOOR ASSY	DRAWN BY	DATE	KIANG 29/09/06	
MATERIAL	---	CHECKED BY	DATE	ROBERT 29/09/06	
FINISH	---	APPROVED BY	DATE	ROBERT 29/09/06	
FILE DIR	18-8125_QD_080930				
				G. E. W Corporation LTD.	

NO.	PART NO.	PART NAME	MATERIAL	QTY
1	C3-8022	UPPER PIVOT CAP	NYLON 66 1300S	1
2	C3-9007	LOWER PIVOT CAP	NYLON 66 1300S	1
3	17-8847	REAR DOOR SPOT WELDING ASSY	---	1

CIRCUIT DIAGRAM







Title		
EM6900 Schematic		
Size	Document Number	Rev
A	Power & Drive Circuit [2-2]	V1.0
Date:	Wednesday, July 07, 2004	Sheet 1 of 1