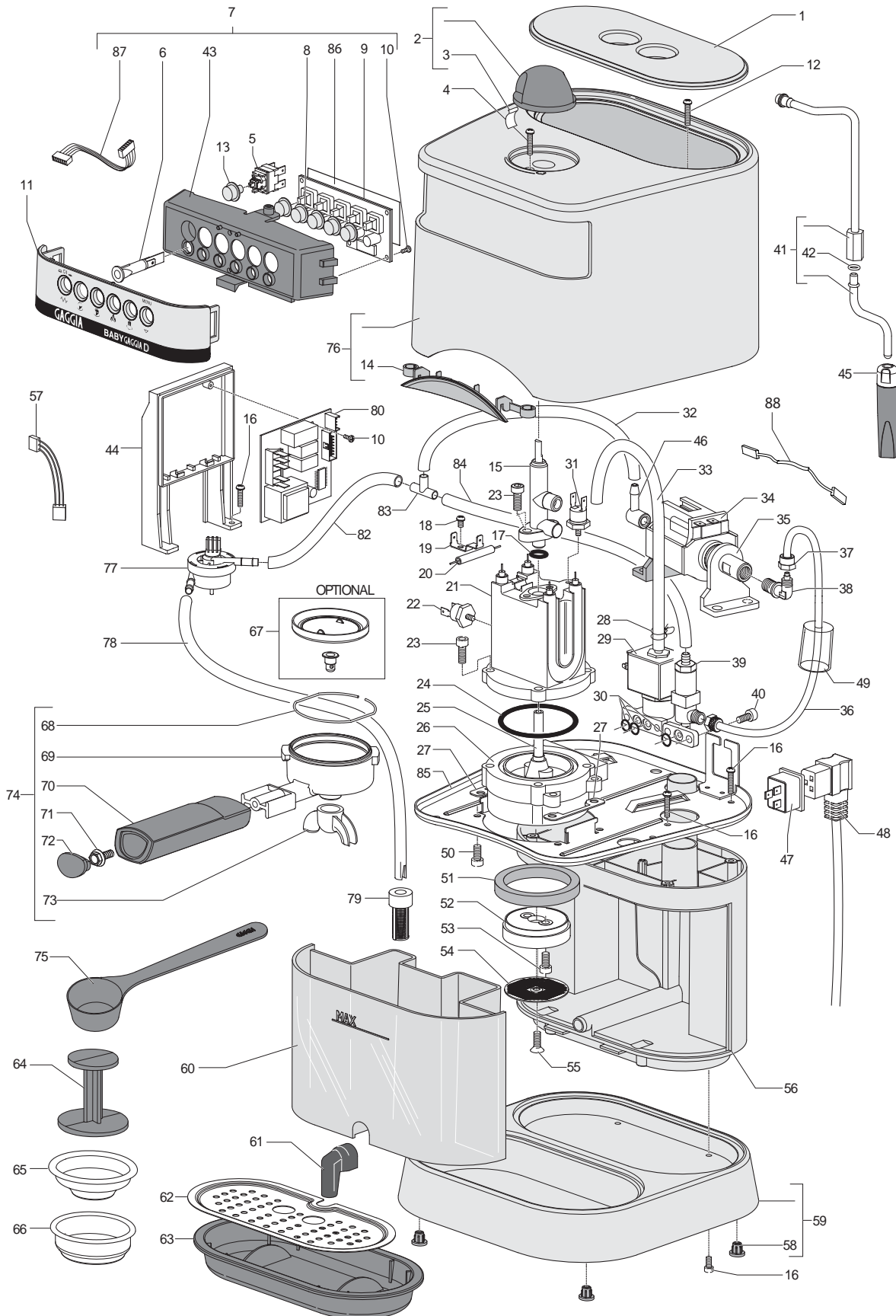


**TAV. 1**



**TAV. 1**

Pos.	Part N°	Descrizione particolare (ITA)	Description of Parts (ENG)
01	B0130	COPERCHIO SERBATOIO	LID
02	B0185/A	ASS.MANOP.VAPORE (B0167+DM0814)	STEAM KNOB ASSEMBLY
03	DM0814	MOLLETTA MANOPOLA TYMER	SPRING FOR KNOB
04	DI7981P3.5X16Z	VITE AF 3,5X16 ZINCATA X MAT.P	SELF TAPPING GALV. SCREWPLAST
05	5317001000	INTERRUTTORE ON-OFF	SWITCH ON/OFF
06	5317002000	SEGNALATORE LUMINOSO V230	WARNING LIGHT V230
06	5317002010	SEGNALATORE LUMINOSO V120 SERIE 33U	WARNING LIGHT V120 SERIES 33U
07	8317003000	ASS.TASTIERA COMANDI V230	V230 CONTROL PANEL
07	8317003010	ASS.TASTIERA COMANDI V120	V120 CONTROL PANEL
08	229140808	TASTO G6000 CROMATO	BUTTON FOR G6000 CHROMIUM PLATED
09	4317003000	MEMBRANA IN SILICONE	SILICON MEMBRANE
10	DI7981P2.9X6.5Z	VITE AF 2,9X6,5 ZINCATA X MAT.	2,9X6,5 SELF TAPPING SCREWPLAS
11	8317001000	ASS.FRONTALINO ESTERNO	EXTERNAL FRONT
12	DI7981P3.5X19I	VITE AF 3,5X19 INOX X MAT.PLAS	SELF-T.SCREWS 3.5X19 ST. STEEL X MA
13	6317005000	TASTO INTERRUTTORE ON-OFF CROMATO	CHROME-PLATED ON-OFF BUTTON
14	6301001000	FRONTALINO ARGENTO	COVER PLATE SILVER
14	6301001010	FRONTALINO ROSSO MET.	FRONT PANEL, MET. RED
15	B0153/A	RUBINETTO COMPLETO	VALVE ASSEMBLY
16	DI7981P4.2X16Z	VITE AF 4,2X16 ZINCATA X MAT.P	SELF TAPPING GALV. SCREWPLAST
17	DM0041/081	GUARNIZIONE OR 112 EPDM 70°SH	OR 112 EPDM GASKET
18	DM1957	VITE M 4X5 ZINC.C/TESTA ZIGRIN.	SCREW M 4X5 GALV.W/KNURLED HEAD
19	GG0064	SQUADRETTA FISS.TERMOFUSIBILE	BRACKET FOR THERMOFUSE
20	DM1040	TERMOFUSIBILE COFFEE GAGGIA	FUSE
21	EF0030/A	GRUPPO CALDAIA V 120/220/240	BOILER ASSEMBLY 120/220/240 V0
22	DM1168	TERMOSTATO CAFFE'T.107°OMOL.	COFFEE TEMPERATURE SWITCH
23	UN5931-6X16Z	VITE M 6X16 ZINCATA	6X16 GALV. SCREW
24	DM0041/082	GUARNIZIONE OR 167 EPDM 70°SH	GASKET OR 167 EPDM 70°SH
25	B0181	PESCANTE	COPPER PIPE
26	B0171	CORPO GRUPPO	GROUP BODY
27	4301004000	GUARNIZIONE ISOLANTE	INSULATING GASKET
28	DM2069	FASCETTA STRINGITUBO HBV 96	TUBE CLAMP HBV 96
29	DM1645/001	ELETTROVALVOLA V.220-230/50 VI	ELECTROVALVE 220-230/50 VI
29	DM1645/002	ELETTROVALVOLA V.120/60 VITON	SOLENOID VALVE V 120 60 CPS
30	WGADM0041/022	GUARNIZIONE OR 2025 SILIC.ROSS	GASKET OR 2025
31	DM1288	TERMOSTATO VAPORE T.145° OMOL.	STEAM TEMPERATURE SWITCH
32	DM1206/009	TUBO SL-TR 5X9X140 SILIC.	SILICON TUBE SL-TR 5X9X140
33	B0159	TUBO SL-NE 5X9X250 SCAR.	SOLENOID VALVE OUTLET PIPE
34	B0225/A/230240	ASS.POMPA ULKA EP5 V 230/50	PUMP ULKA EP5 V 230/50
34	DM1792/120	POMPA CP3A V 120/60 C/TERMOS.	PUMP V 120/60
35	WGADY0003	SUPPORTO POMPA ULKA	PUMP SUPPORT ULKA
35	DY0003/01	SUPPORTO POMPA EATON	EATON PUMP MOUNT
36	CF0185	TUBO P.T.F.E. 4X6X150 MANDATA	PUMP P.T.F.E. TUBING 4X6X150
37	WGAB0053	DADO	NUT
38	B0052	RACCORDO A GOMITO 1/8 GAS-M 10	ELBOW FITTING 1/8 GAS
39	B0147/A	ASSIEME VALVOLA	VALVE ASSEMBLY
40	UN5931-5X12Z	VITE M 5X12 ZINCATA	5X12 GALV. SCREW
41	B0241/A	ASS.TUBO VAPORE X PANNAR.	STEAM TUBE FOR PANNAR.
42	DM0041/088	GUARNIZIONE OR 2025 EPDM 70°SH	O-RING GASKET 2025 EPDM
43	4317002000	SUPPORTO SCHEDA TASTI	KEYPAD MOUNT
43	4317002010	SUPPORTO SCHEDA TASTI UL	UL KEYPAD MOUNT
44	4317007000	SUPPORTO CENTRALINA DOSATURA	DOSER CONTROL PANEL
44	4317007010	SUPPORTO CENTRALINA DOSATURA UL	DOSER CONTROL PANEL UL MOUNT
45	8301006000	ASS.PANNARELLO	FROTHER SET
46	DM1596	RACCORDO ASPIRAZIONE POMPA ULK	INLET FITTING

**TAV. 1**

Pos.	Part N°	Descrizione particolare (ITA)	Description of Parts (ENG)
47	WGADM1563	SPINA AUTOBLOCCANTE TRIPOL.(ST	3 POLE SELF LOCKING PIN
47	DM1563/001	SPINA AUTOBLOCCANTE BIPOL.(STS	SELF FIXING PIN V 120
48	CF0292/SCH	CAVO ALIMENTAZIONE 3X1 SCHUKO	SCHUKO POWER CORD
49	B0196	DISPOSITIVO DI CONTENIMENTO	SAFETY RUBBER DEVICE
50	UN5931-5X12I	VITE M 5X12 INOX	5X12 S.S. SCREW
51	NG01/001	GUARNIZIONE SOTTOCOPPA (8,5)	FILTER HOLDER GASKET
52	DY0036/A	ASSIEME PORTADOCGETTA	SHOWER HOLDING PLATE
53	UN5931-6X12I	VITE M 6X12 INOX	6X12 S.S. SCREW
54	DM0704	DOCGETTA	SHOWER
55	DI7987-5X8I	VITE TSP M5X8 UNI 7688 DIN 965 INOX	SCREW TSP M5X8 UNI 7688 DIN 965 INOX
56	4301002000	CORPO CENTRALE	CENTRAL BODY
57	4317018000	CABLAGGIO DOSATORE VOLUMETRICO	WIRING FOR VOLUMETRIC DOSER
58	WGAFG0245	PIEDINO	FOOT
59	8301008020	ASS.CORPO INFERIORE-PIED.GRI.MET.	LOWER SHELL - METALLIC GREY FEET
59	8301008030	ASS.CORPO INFERIORE-PIED.ROSSO MET.	LOWER SHELL - METALLIC RED FEET
60	B0173	SERBATOIO	WATER TANK
61	B0164	RACCORDO SCARICO SOVRAPRESSION	FITTING FOR OUTLET PRESSURE
62	B0166	GRIGLIA	GRID
63	B0093	BACINELLA IN PLASTICA	LOWER DRIP TRAY
64	WGA2PR/1	PRESSINO	SEPARATOR
65	NF08/002	FILTRO A 1 TAZZA 5.5/6.5 GR.	1-CUP FILTER 5.5/6.5 GR.
66	NF08/005	FILTRO A 2 TAZZE 12-14 GR.	TWO CUPS FILTER 12/14 GRS.
67	GG0138/01/A	DISCO EMULSIONATORE COMPLETO	COMPLETE EMULSION DISK
68	18G1514	MOLLA PER PORTAFILTRO	RETAINING - FILTER SPRING
69	4301002000	COPPA PORTAFILTRO	FILTER HOLDER CUP
70	RE0002	MANOPOLA PORTAFILTRO	FILTER HOLDER HAND GRIP
71	WGADM1319	VITE A TESTA ESAG. CON FINTA R	6X16 GALVAN. SPECIAL SCREW
72	RE0015	TAPPO MANOPOLA PORTAFILTRO	PLUG FOR HAND GRIP
73	WGA6301004010	BECCUCCIO 2 VIE CROMATO	2-WAY SPOUT CHROME
74	8301005010	ASS.COPPA PORTAFILTRO (CROM.)	FILTER BASKET SET (CHROME)
75	WGADM1017	MISURINO 7 GR.	MEASURE
76	8301012020	ASS.CORPO SUPER.GRIG.MET.-FRONTAL.	UPPER BODY SET MET. GRAY-COVER PLAT
76	8301012030	ASS.CORPO SUPER.ROSSO MET.-FRONTAL.	UPPER SHELL - METALLIC RED - FRONT
77	5317005000	DOSATORE VOLUMETR.DIGMESA 974-8521	VOLUMETRIC DOSER
78	WGAB0157/01	TUBO SL-TRBF 5X9X360 ASPI.	SILICONE TUBE 5X9 L=360 MM
79	DM1806/01	FILTRO ACQUA SERBATOIO D.9	WATER FILTER
80	5317003000	CENTRALINA DOSATURA V230	V230 DOSAGE CONTROL UNIT
80	5317003010	CENTRALINA DOSATURA V120	V120 DOSAGE CONTROL UNIT
82	DM1206/014	TUBO SL-TR 5X9X45 SILIC.	SL-TR TUBE 5X9X45 SILIC.
83	147920300	RACCORDO T D=8 ART.80.26.047 KA.461	TEE CONNECTOR D=8 ART.80.26.047 KA
84	DM1206	TUBO SL-TR 5X9X210 SILIC.	SILICONE TUBING
85	8301002000	ASS.PIASTRA	PLATE SET
86	4317006000	CIRCUITO STAMPATO	PRINTED CIRCUIT
87	8317010000	ASS.CAVO FLAT-GUAINA FIBRA VETRO	FLAT CABLE AND FIBREGLASS SHEATH
88	CE0429/UL-CSA	CAVETTO UL-CSA POMPE EATON C/T	CABLE UL-CSA FOR PUMP EATON
	8317002000	ASS.CABLAGGIO V230 NEW BABY DOSATA	WIRING ASSEMBLY V230
	8317002010	ASS.CABLAGGIO V120 NEW BABY DOSATA	WIRING ASSEMBLY V120
	4317013010	SCATOLA IMBALLO NEW BABY DOSATA RED	PACKAGING BOX NEW BABY DOSATA RED
	4317013000	SCATOLA IMBALLO NEW BABY DOSATA	PACKAGING BOX NEW BABY DOSATA
	4301012000	IMBALLO INTERNO INF.	LOWER INTERNAL PACKING
	B0194	IMBALLO INTERNO SUPERIORE	PACKING BUFFER - UPPER
	4317017000	LIBRETTO ISTRUZIONI BABY DOSATA	INSTRUCTIONS MANUAL