

# TAURO

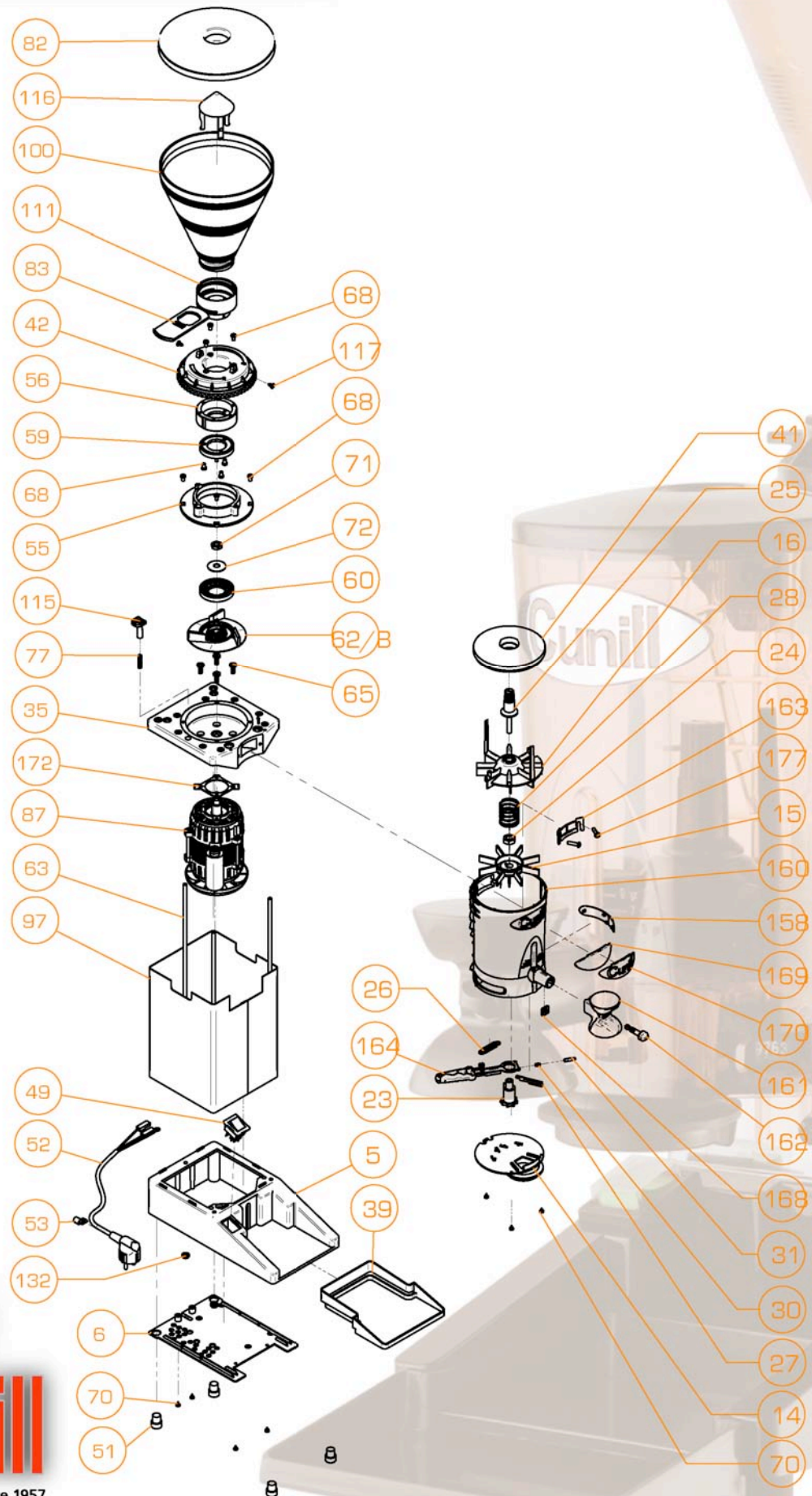
Pieces



classic



# TAURO



Since 1957



# TAURO

REF.	DENOMINATION	CANT.	REF.	DENOMINATION	CANT.
100	HOPPER 1 KG	1	35	SQUARED COVER	1
111	HOPPER COLLAR	1	39	SQUARED TRAY	1
115	ADJUSTMENT PAWL	1	41	DISPENSER COVER	1
116	HOPPER INNER PROTECTOR	1	42	AJUSTMENT DISK	1
117	SCREW Ø4,2x9,5 DIN 7983	2	49	SWITCH	1
132	NUT M6 DIN 6923.8	3	5	MODULE BASE SPACE-COLOMBIA	1
14	DISPENSER BASE PLATE DIRECT INTAKE(SEAL-SAVER)	1	51	CIRCULAR RUBBER FOOT	4
15	FIX STARPIECE	1	52	ELECTRIC CABLE WITH PLUG	1
158	DISPENSER LATERAL COVER 2003	1	53	CABLE METAL CLIP	1
16	UPPER STARPIECE + MEDIUM STARPIECE	1	55	GRINDWHEEL HOUSING SUPPORT	1
160	DISPENSER 600GR. 2003	1	56	GRINDWHEEL HOUSING Ø59	1
161	ROTATORY PRESS	1	59	UPPER BLADE Ø59	1
162	ROTATORY PRESS FIXATION	1	6	INFERIOR COVER SPACE-COLOMBIA-TAURO	1
163	FINGER PROTECTOR	1	60	LOWER BLADE Ø59	1
164	DISPENSER LEVER 2003	1	62/B	ALUMINIUM EXPELLER "CLASSIC"	1
168	DISPENSER NUT	1	63	THREADED ROD M6x255mm	3
169	CUSTOMIZED PLAQUE DISPENSER/COFFEE GRINDER	1	65	SCREW M6x15 C.C. SOBRE MOTOR DIN 7985	4
170	CUNILL PLAQUE DISPENSER/COFFEE GRINDER	1	68	SCREW M5x8 DIN 7985	10
172	FIXING MOTOR WASHER	1	70	SCREW ROSCA CHAPA D3.5x6,5DIN 7981	7
177	SCREW M5x20 ISO 7380	2	71	NUT FOR BLADES FIXATION	1
23	RATCHET SHAFT	1	72	WASHER FOR BLADES FIXATION	1
24	HEXAGONAL NUT M12 DIN 934	1	77	ADJUSTMENT PAWL SPRING	1
25	DISPENSER ADJUSTMENT NUT	1	82	HOPPER COVER	1
26	DISPENSER LEVER RETRACTION SPRING	1	83	CLOSING HOPPER PIECE	1
27	DISPENSER HOOP	1	87	MOTOR N°3	1
28	STARPIECE SPRING	1	97	TAURO BODY IN STAINLESS	1
30	LEVER PAWL SPRING	1			
31	LEVER PAWL	1			

