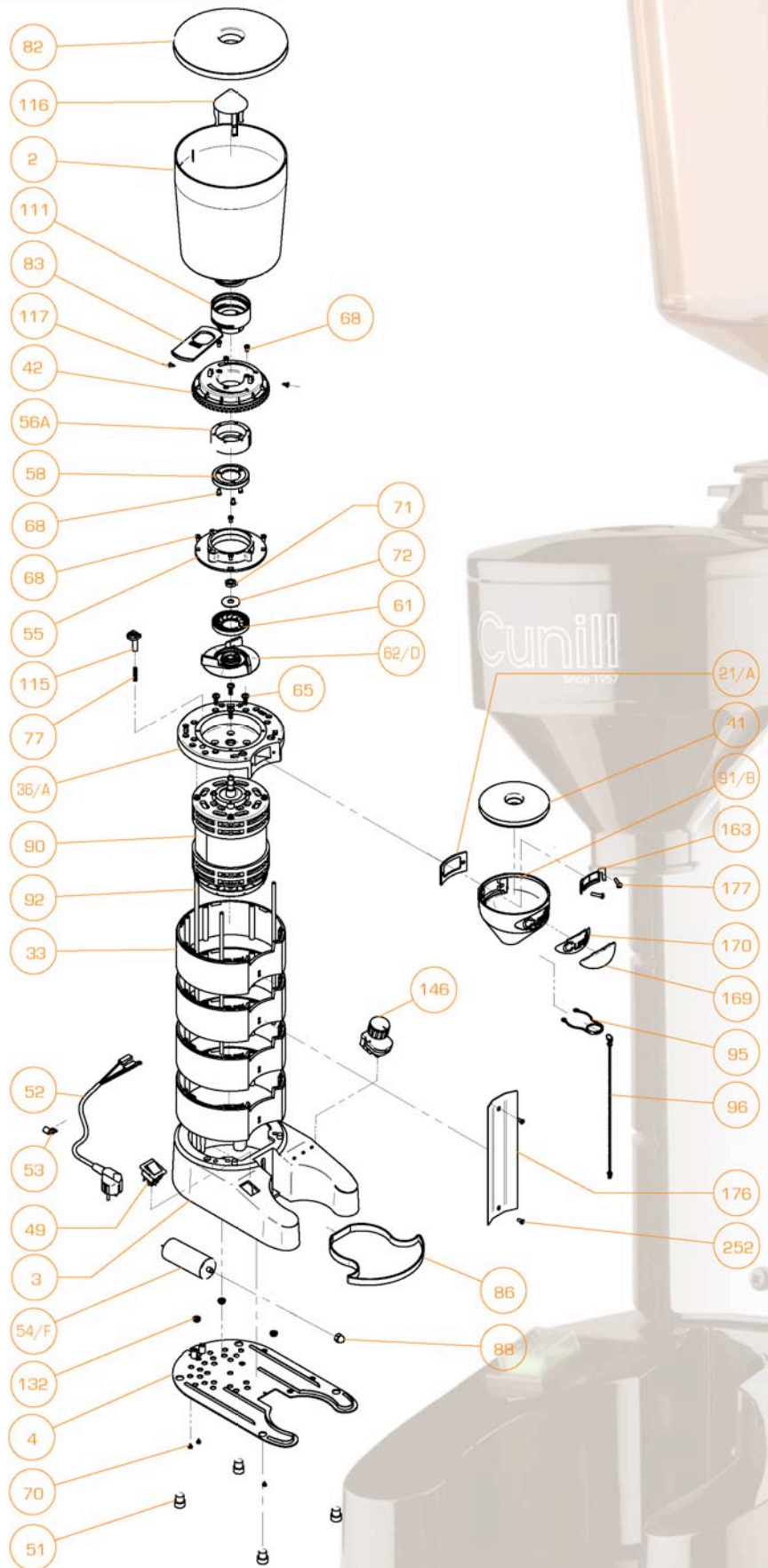


MICHIGAN

Pieces



MICHIGAN



Since 1957

MICHIGAN

REF.	DENOMINATION	CANT.	REF.	DENOMINATION	CANT.
111	HOPPER COLLAR	1	53	CABLE METAL CLIP	1
115	ADJUSTMENT PAWL	1	54/F	CONDENSER 25mF	1
116	HOPPER INNER PROTECTOR	1	55	GRINDWHEEL HOUSING SUPPORT	1
117	SCREW Ø4,2x9,5 DIN 7983	2	56A	GRINDWHEEL HOUSING Ø65	1
132	NUT M6 DIN 6923.8	3	58	UPPER BLADE Ø65	1
146	TIMER M/ 15MIN	1	61	INFERIOR BLADE Ø65	1
163	FINGER PROTECTOR	1	62/D	ALLUMINIUM EXPELLER "MICHIGAN" Ø65	1
169	CUSTOMIZED PLAQUE DISPENSER/COFFEE GRINDER	1	65	SCREW M6x15 C.C. MOTOR COVER DIN 7985	4
170	CUNILL PLAQUE DISPENSER/COFFEE GRINDER	1	68	SCREW M5x8 DIN 7985	10
176	FRONTAL PROTECTOR MICHIGAN	1	70	SCREW D3,5x6,5DIN 7981	3
177	SCREW M5x20 ISO 7380	2	71	NUT FOR BLADES FIXATION	1
2	HOPPER DE 2 KG	1	72	WASHER FOR BLADES FIXATION	1
21/A	BIG DISPENSER BACK COVER	1	77	ADJUSTMENT PAWL SPRING	1
252	SCREW D4,2x9,5 DIN 7981	2	82	HOPPER COVER	1
3	BASE BRASIL-MARFIL-MICHIGAN-NOBEL-HAWAI	1	83	CLOSING HOPPER PIECE	1
33	CIRCULAR MODULE	4	86	TRAY FOR MARFIL-MARFIL-MICHIGAN-NOBEL-HAWAI	1
36/A	ALUMINIUM CIRCULAR COVER	1			
4	INFERIOR COVER BRASIL MARFIL	1	88	NUT M8 DIN 1587	1
41	DISPENSER COVER	1	90	MOTOR N° 1 MICHIGAN 1CV	1
42	ADJUSTMENT DISK	1	91/B	FUNNEL 1 PIECE	1
49	SWITCH	1	92	THREADED ROD M6x305mm	3
51	CIRCULAR RUBBER FOOT	4	95	BAG HOLDER CLIP FOR MICHIGAN	1
52	ELECTRIC CABLE WITH PLUG	1	96	BAG HOLDER CHAIN	1

