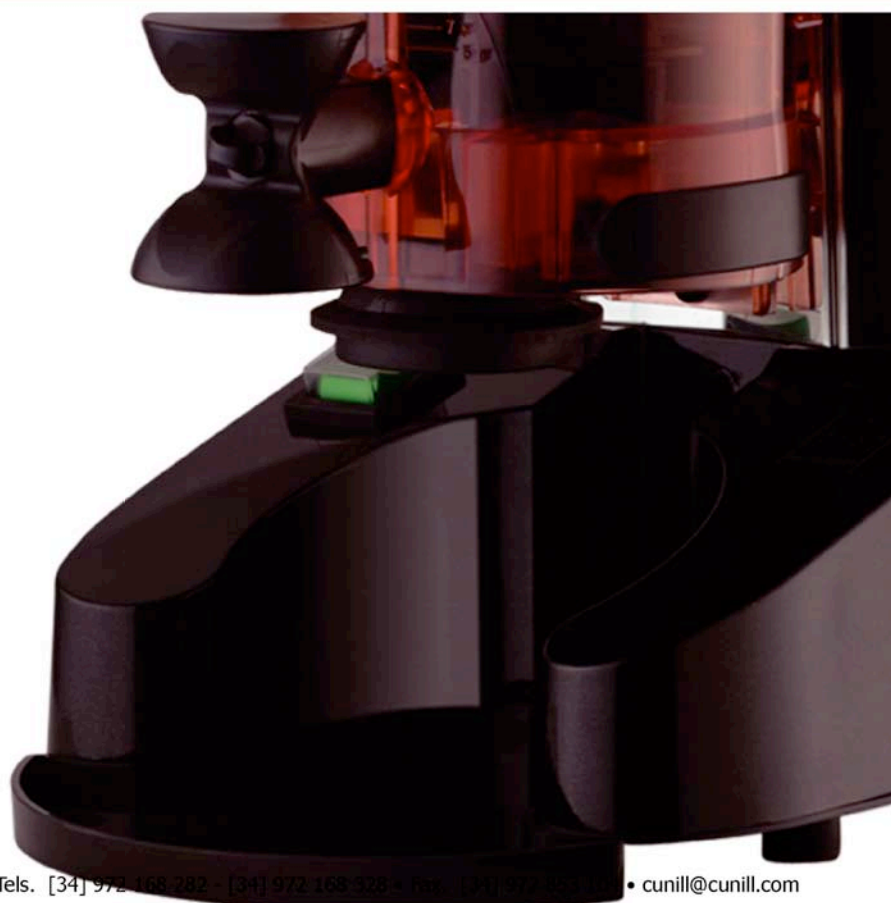


BRASIL

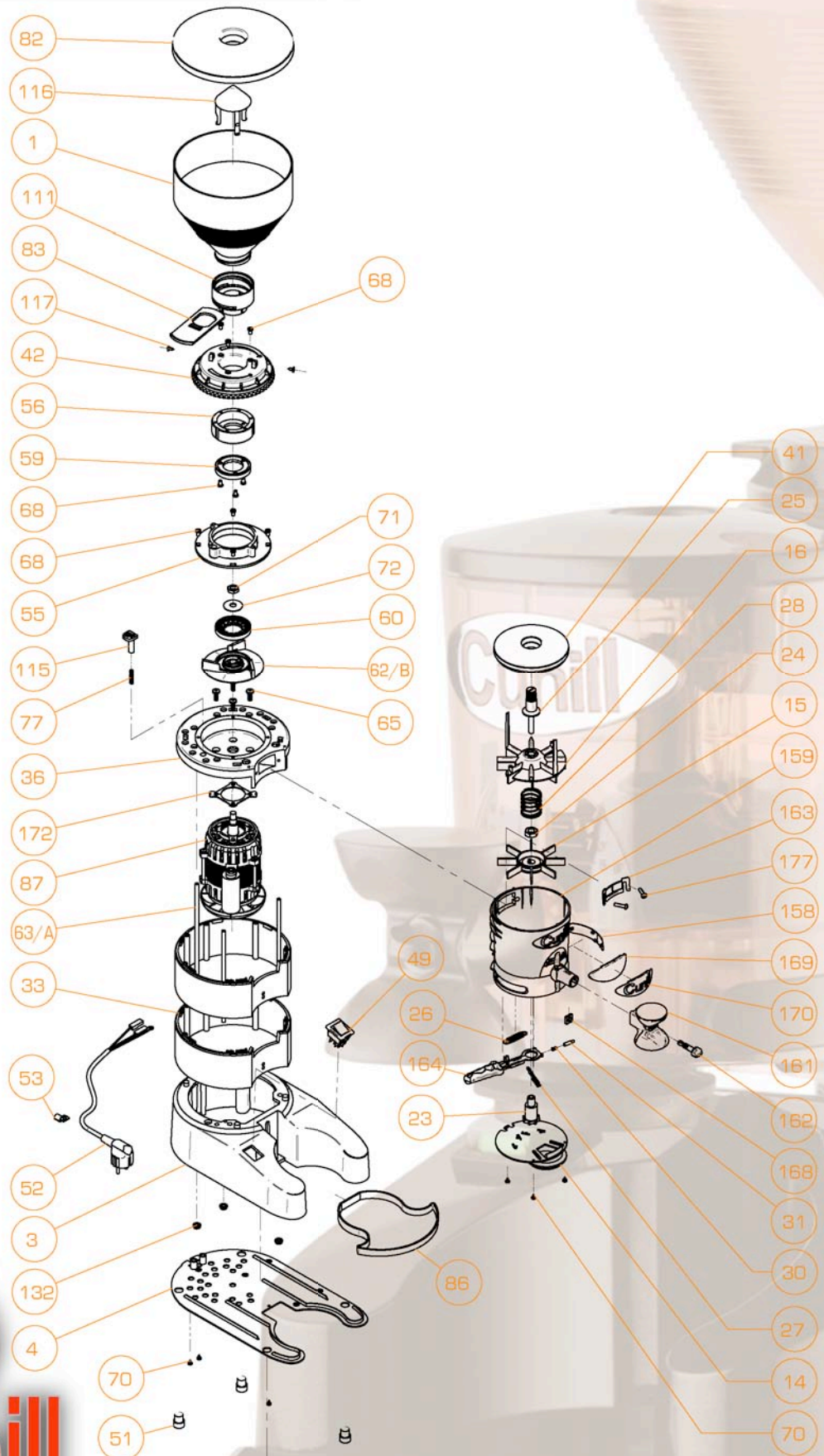
Pieces



classic



BRASIL



Since 1957

BRASIL

REF.	DENOMINATION	CANT.	REF.	DENOMINATION	CANT.
1	HOPPER 1KG	1	31	LEVER PAWL	1
111	HOPPER COLLAR	1	33	CIRCULAR MODULE	2
115	ADJUSTMENT PAWL	1	36	CIRCULAR COVER	1
116	HOPPER INNER PROTECTOR	1	4	BASE PLATE BRASIL MARFIL	1
117	FIXING SCREW 4,2x9,5 DIN 7983	2	41	DISPENSER COVER	1
132	NUT M6 DIN 6923.8	3	42	ADJUSTMENT DISK	1
14	DISPENSER BASE PLATE DIRECT INTAKE (SEAL SAVER)	1	49	SWITCH	1
15	FIX STARPIECE	1	51	CIRCULAR RUBBER FOOT	4
158	DISPENSER LATERAL COVER 2003	1	52	ELECTRIC CABLE WITH PLUG	1
159	DISPENSER 300g 1 BODY 2003	1	53	CABLE METAL CLIP	1
16	UPPER STARPIECE + MEDIUM STARPIECE	1	55	GRINDWHEEL HOUSING SUPPORT	1
161	ROTATORY PRESS	1	56	GRINDWHEEL HOUSING 059	1
162	FIXATION FOR ROTATORY PRESS	1	59	UPPER BLADE 059	1
163	FINGER PROTECTOR	1	60	LOWER BLADE 059	1
164	DISPENSER LEVER 2003	1	62/B	ALUMINIUM EXPPELLER "CLASSIC"	1
168	DISPENSER NUT	1	63/A	THREADED ROD M6x185	3
169	CUSTOMIZED PLAQUE FOR DISPENSER/COFFEE GRINDER	1	65	SCREW M6x15 MOTOR COVER DIN 7985	4
170	CUNILL PLAQUE FOR DISPENSER/COFFEE GRINDER	1	68	SCREW M5x8 DIN 7985	10
172	MOTOR FIXING WASHER	1	70	SCREW 3,5x6,5 DIN 7981	6
177	SCREW M5x20 ISO 7380	2	71	NUT FOR BLADES FIXATION	1
23	RATCHET SHAFT	1	72	WASHER FOR BLADES FIXATION	1
24	HEXAGONAL NUT M12 DIN 934	1	77	ADJUSTMENT PAWL SPRING	1
25	DISPENSER AJUSTMENT NUT	1	82	HOPPER COVER	1
26	DISPENSER LEVER RETRACTION SPRING	1	83	CLOSING HOPPER PIECE	1
27	DISPENSER HOOP	1	86	TRAY BRASIL-MARFIL-MICHIGAN-NOBEL-HAWAI	1
28	STARPRIECE SPRING	1	87	MOTOR N°3	1
3	ROUND BASE	1			
30	LEVER PAWL SPRING	1			

